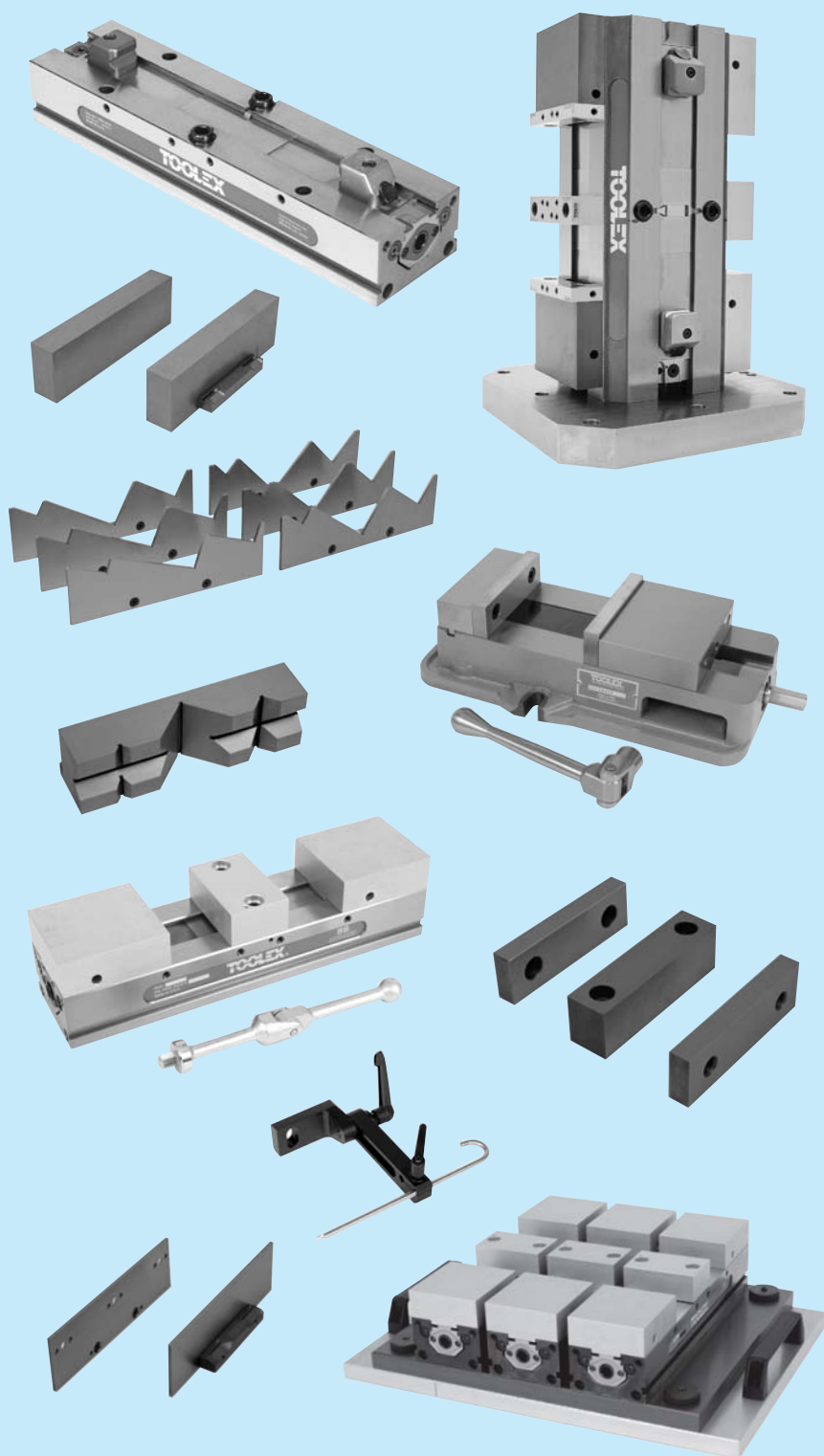


TOOLEX VISE WORKHOLDING SYSTEMS



ReLock Vise System

Introduction	164
Features & Benefits	165-167
2-Station Vise	168
HydraLock Series	169-170
2-Station Vise Conversion Plate	171
Vise Capacities	171
8-Station Vise and Accessories	172-173
8-Station Compact Quad	174
DS Series 2-Station Vise	175
T-680 Single Station Vise	176
Vise Mounting Kit	176

SnapLock Jaws & Plates

AccuSnap Vise Jaw System ...

AccuSnap Accessories

Torque Wrenches

QuickChange Jaws & Parallels

Vise Accessories

Starter Packages (RSP)

8-Station Baseplate Mounting Information

ReLock 2-Station Parts List ...

ReLock 8-Station Parts List ...

AccuSnap Parts List

QuickChange Parts List

Fixture Plate Quotation Worksheet

ReLock-8 Indexer Assembly Quotation Worksheet

Toolex Vise Systems

Introduction/Features & Benefits .. 164-167



ReLock® Double Station Vise 168



Double Station Vise with
Machinable Soft Jaws 168



Double Station Vise with Hard Jaws ... 168



Double Station Hydraulic Vise &
Accessories 169-170



Single Station Conversion Plate for
ReLock 2-Station Vise 171



ReLock® Eight Station Vise 172

Eight Station Vise with
Machinable Soft Jaws 172



Eight Station Vise with Hard Jaws 172



Single Station Conversion Plates for
ReLock 8-Station Vise 173

ReLock-8 Support/Alignment Nose 173

ReLock-8 Support Bracket 173

ReLock-8 Adapter Plate 173



ReLock Eight Station Compact Quad . 174



DS Series Double Station Vise 175



Vise Mounting Kit 176



SnapLock Machinable Fixture Jaws ... 178



SnapLock Carrier Jaws 179



SnapLock Fixture Plates 179



AccuSnap Master Jaws 181



AccuSnap Individual Parallel Sets 181



AccuSnap Parallel Kits 182



AccuSnap Mill Angles 182



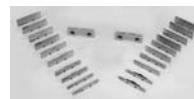
AccuSnap Mill Angle Kits 183



AccuSnap Machinable Fixture Jaws ... 183



AccuSnap "V" Jaws 183



AccuSnap Starter Packages for
Competitor Double Station Vises 184

AccuSnap Starter Packages for
Competitor Single Station Vises 184






















AccuSnap Modular Workstops 185



AccuSnap Spacers 185

AccuSnap Presetting Gage 186

	Sine Fixture Keys 186
	Torque Wrench 186
	QuickChange Master Jaws 188
	QuickChange Individual Parallel Sets 188
	QuickChange Parallel Kits 189
	QuickChange Mill Angles 189
	QuickChange Mill Angle Kits 190
	QuickChange "V" Jaws 190
	QuickChange Machinable (soft) Fixture Jaws 191
	QuickChange Starter Packages 191
	QuickStop 192
	Standard Hard Jaws 192
	Universal Workstop 192
	Vise Clamps 193
	Bumper Assembly 193

	Bolt-On Aluminum Soft Jaws 194
	Holder Racks for AccuSnap Parallels 194
	Chip Shield Covers for Toolex Double Station Vise 194
	ReLock System Starter Packages 195

POINT AND CLICK ON THE PHOTOS NEXT TO THE ITEMS LISTED IN THIS INDEX TO GO DIRECTLY TO A CATALOG PAGE

INTRODUCING...

The ReLock Modular Workholding System from TE-CO

The ReLock Workholding System's unique modular design offers many innovative features and benefits that will help you stay ahead of the competition in today's extremely demanding manufacturing environment.

REDUCE SETUP TIMES

The innovative ReLock modular design drastically reduces workholding setup times. The system's SnapLock feature allows you to change or index jaws in a matter of seconds.

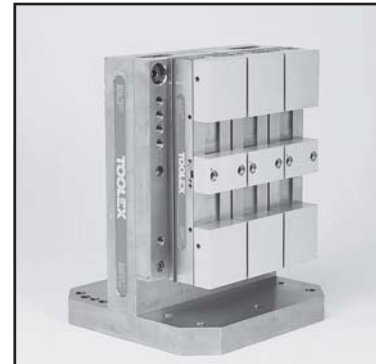
EXTREMELY VERSATILE

The ReLock offers the most comprehensive array of jaws and accessories available for vertical or horizontal machining applications.

• ACCURATE & DURABLE

The ReLock is designed and precision manufactured from high grade materials to meet the extreme accuracy and durability requirements in today's manufacturing environment.

Bodies manufactured from 80,000 PSI ductile cast iron. Ways are flamed hardened to 40 R/C Maximum.



OPTIMIZED TABLE SPACE

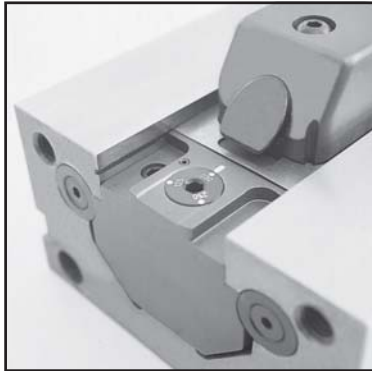
The ReLock's compact modular design allows a multitude of mounting configurations. Vises can be mounted close together without hindering removal or attachment of jaws.



RELOCK-8 STATION

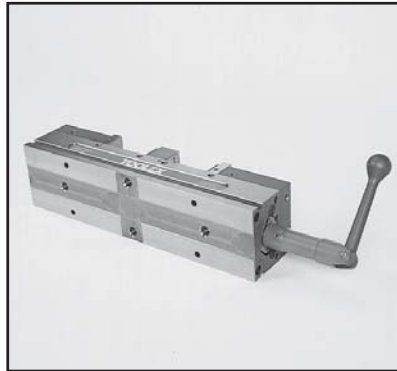
The ReLock-8 Station is ideal for horizontal machining centers as well as with rotary indexers on vertical machining centers. The unibody design makes it lightweight, compact and extremely rigid.





AUTO OFFSET MECHANISM

The ReLock's exclusive Automatic Offset Mechanism allows non-simultaneous workpiece clamping and unclamping to one of three optional offset settings: 4" and 6": .030", .125", or .250"; 8": .125", .250", or .375". The offset setting is the distance the rear jaw backs away from the workpiece before the front jaw begins to back away.



LOCATING & MOUNTING

Locating and mounting options of the ReLock are simple and accurate. The bottom surface of the system has four precision dowel pin holes for locating, and four drilled and counter bored holes drilled through from the top surface for rugged mounting. Side toe clamp slots are also incorporated for mounting. See pages 196-197 for mounting & locating information regarding the 8-station vises.



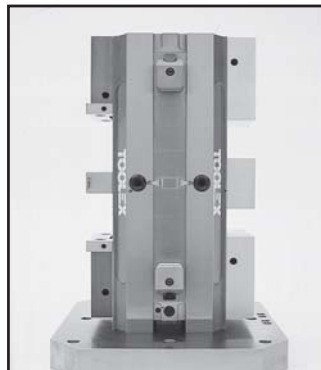
SNAPLOCK KNUCKLE

The ReLock's exclusive SnapLock Knuckle allows SnapLock Soft Jaws and SnapLock Carrier Jaws to be attached and removed in seconds. Shown above, the knuckle's angle notch engages with the jaw's pressure pin eliminating jaw deflection.



CENTER JAW LOCATION

The ReLock's Center Jaw Locating Studs allow quick jaw mounting and indexing to accuracies of $\pm .0005"$. Fool proof pin eliminates the possibility of jaws being accidentally mounted in reverse.



RELOCK CHIP SHIELDS

The ReLock's unique three piece telescoping chip shield wraps completely around SnapLock Knuckles keeping chips from getting into vise's clamping mechanism. Shields can quickly be removed for maintenance.



SINGLE STATION CONVERSION PLATE

The Single Station Conversion Plate used in conjunction with SnapLock Carrier Jaws allows the ReLock System to be converted from a double to a single station vise. This is ideal for larger workpieces. (See page 168 for the 2-station version; see page 172 for the 8-station version.)

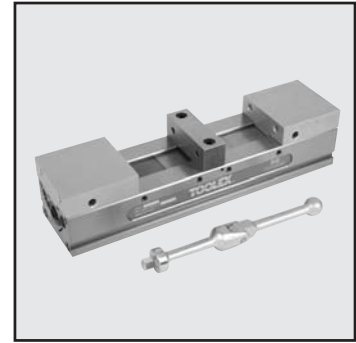


SNAPLOCK MACHINABLE FIXTURE JAWS

Snaplock Machinable Fixture Jaws can be attached, reversed, removed or indexed in a matter of seconds.



... Snaplock Machinable Fixture Jaws are extremely versatile, allowing endless customization possibilities. Jaws are manufactured from steel and high quality aluminum material. See pages 177-179.



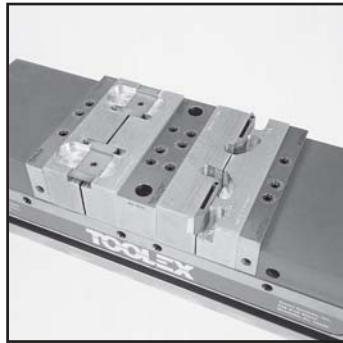
SNAPLOCK CARRIER JAWS

SnapLock Carrier Jaws allow mounting of AccuSnap and QuickChange Master Jaws or standard bolt on jaws using an industry standard bolt pattern.



ACCUSNAP VISE JAW SYSTEM

The AccuSnap Vise Jaw System pictured above shows master jaws, and parallels being used for workpiece setup. The AccuSnap System allows setup change-over in seconds with extreme accuracy. See pages 180-186.



ACCUSNAP MACHINABLE FIXTURE JAWS

AccuSnap Fixture (Soft) Jaws are ideal for many workholding options of smaller workpieces. Jaws are offered in two thicknesses from either aluminum or pre-hardened steel. See page 183.



ACCUSNAP WORKSTOPS

AccuSnap Workstops easily mount to AccuSnap Parallels in many different configurations to provide extremely accurate workpiece location and repeatability. AccuSnap Workstops can be used in conjunction with the AccuSnap Presetting Gage to accurately reference your X, Y & Z machine datums. See pages 185-186.



QUICKCHANGE VISE JAW SYSTEM

The QuickChange Vise Jaw System slides into position via a dovetail slot. The system includes master jaws, parallels, V-blocks, Mill Angles and Machinable Soft Jaws. See pages 187-191.

BOTH THE ACCUSNAP AND QUICKCHANGE VISE JAW SYSTEMS CAN BE USED IN CONJUNCTION WITH MOST VISE SYSTEMS

ACCUSNAP / QUICKCHANGE PARALLELS

AccuSnap & QuickChange Parallels are designed for a multitude of setup variations when you need to position a workpiece between hardened jaws. AccuSnap parallels snap in and out of the AccuSnap Master Jaws in seconds. QuickChange parallels slide into position via a dovetail slot & gib.

ACCUSNAP / QUICKCHANGE MACHINABLE FIXTURE JAWS

AccuSnap & QuickChange Machinable Fixture Jaws can be customized quickly to fixture a wide array of workpieces. The jaws snap or slide in and out of the master jaws in seconds. Available in either aluminum or pre-hardened steel.

SNAPLOCK CARRIER JAWS

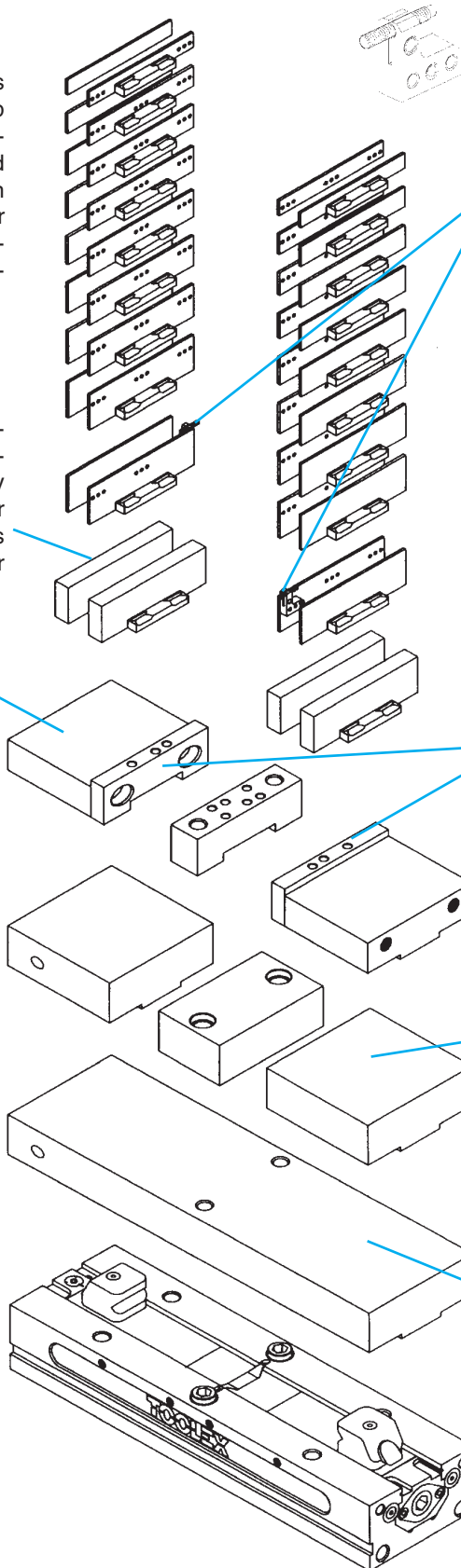
SnapLock Carrier Jaws allow mounting of AccuSnap and QuickChange Master Jaws by using an industry standard bolt size and pattern. Carrier jaws quickly snap on or off of SnapLock knuckles in seconds.

SINGLE STATION CONVERSION PLATE

The Single Station Conversion Plate quickly converts the ReLock from double station to single station vise for larger workpieces.

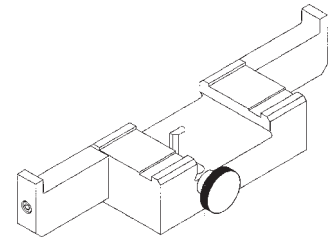
UNIVERSAL WORKSTOP

The Universal Workstop easily mounts to the side of ReLock in numerous positions. Optional extension is available for larger workpieces.



ACCUSNAP MODULAR WORKSTOPS

AccuSnap Modular Workstops quickly mount to parallels in many different positions. As many as three stops can be mounted to a single parallel to accommodate multi-piece setups.



ACCUSNAP WORKSTOP PRESETTING GAUGE

The AccuSnap Workstop Presetting Gauge in combination with a standard micrometer allows you to precisely preset your modular workstop positions in relation to the X, Y, and Z machine datums.

ACCUSNAP / QUICKCHANGE MASTER JAWS

AccuSnap & QuickChange Master Jaws easily mount to the SnapLock Carrier Jaws by using industry standard bolt size and pattern. AccuSnap master jaws patented locking receptacle accepts all AccuSnap accessories in seconds.

SNAPLOCK REVERSIBLE MACHINABLE FIXTURE JAWS

SnapLock Machinable Fixture Jaws are the most versatile method of fixturing on the ReLock System. Customizing options are endless. Jaws can be machined on two faces for additional set-up. Manufactured from high quality aluminum.

SNAPLOCK FIXTURE PLATE

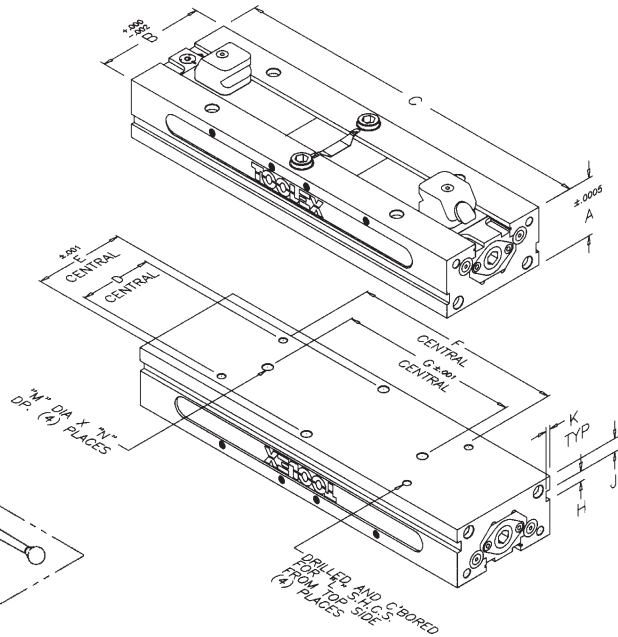
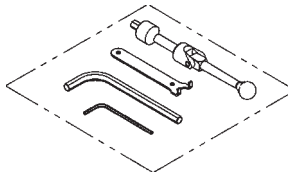
The SnapLock Fixture Plate is ideal for many fixturing applications, such as holding many small parts or parts with difficult clamping or locating requirements. Fixture Plates can be attached or removed in seconds and are offered in two widths from high quality aluminum.



- Body manufactured from 80,000 PSI ductile cast iron.
- Ways are flame hardened to 40 R/C maximum.
- Starter packages available on page 195.

Specifications

Vise Size	Net Weight	Clamping Pressure	Foot Pound Recommendation
4"	33 lbs.	0 to 6,000 lbs.	45-50
6"	68 lbs.	0 to 12,000 lbs.	100-110
8"	110 lbs.	0 to 16,000 lbs.	180-190

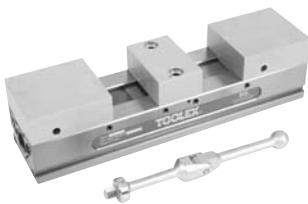


Vise Size	Part Number	A	B	C	D	E	F	G	H	J	K	L	M	N
4"	RWS4002	2.500	4.000	16.000	3.000	3.000	9.000	10.000	.375	.500	.190	5/16-18	.501	.560
6"	RWS6002	3.250	6.000	20.500	4.000	5.000	12.000	10.000	.562	.750	.250	3/8-16	.501	.630
8"	RWS8002	4.000	8.000	28.500	6.000	6.000	16.000	14.000	.625	.750	.312	1/2-13	.751	.900

Replacement parts available on pages 198-199

- Jaws not included

Double Station Vise with Machinable Soft Jaws



Vise Size	Package Number	Package Contents
4"	RWS4002SJ	1-RWS4002 1-SSJ4000
6"	RWS6002SJ	1-RWS6002 1-SSJ6000
8"	RWS8002SJ	1-RWS8002 1-SSJ8000

- Body manufactured from 80,000 PSI ductile cast iron
- Ways are flame hardened to 40 R/C maximum
- For vise specifications and jaw capacities see above and page 171.
- Includes handle and tool kit (pry wrench and hex wrenches)
- Package includes Double Station Vise and a 3-piece Machinable Soft Jaw Set
- See page 178 for SnapLock Machinable Fixture Jaws specifications

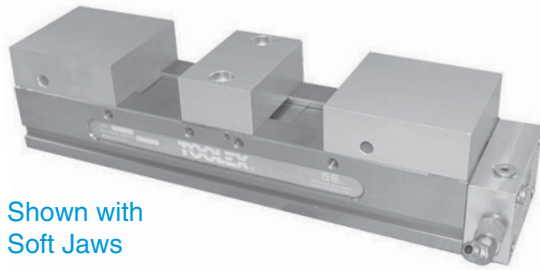
Double Station Vise with Hard Jaws



Vise Size	Package Number	Package Contents
4"	RWS4002HJ	1-RWS4002 1-SCJ4000 1-SHJ4035
6"	RWS6002HJ	1-RWS6002 1-SCJ6000 1-SHJ6035
8"	RWS8002HJ	1-RWS8002 1-SCJ8000 1-SHJ8035

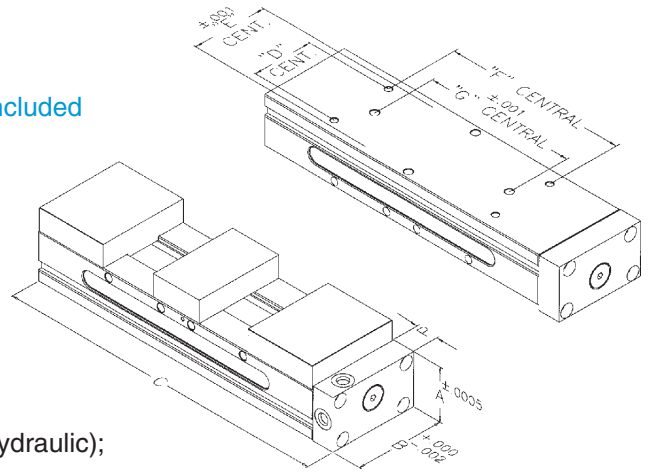
- Body manufactured from 80,000 PSI ductile cast iron
- Ways are flame hardened to 40 R/C maximum
- Vise specifications and jaw capacities shown above and on page 171.
- Includes handle and tool kit (pry wrench and hex wrenches)
- Standard Hard Jaws specifications on page 192.
- Outside Carrier Jaws manufactured from high quality aluminum material, see page 179.
- Package includes Double Station Vise, 2 Carrier Jaws and a 3-piece Standard Hard Jaw Set.

HydraLock Series – Double Station Hydraulic Vise



Shown with
Soft Jaws

Jaws not included



- Body manufactured from 80,000 PSI ductile cast iron
- Ways are flame hardened to 40 R/C maximum
- Vise features an internalized hydraulic segment
- Compact internal design does not add additional length to the vise body
- Maximum clamping force 4": 4,000 lbs. @ 3,500 PSI (hydraulic); 6": 12,000 @ 3,500 PSI (hydraulic)
- Manifold plate mounts to the front of vise and has two ports (top and side) for hydraulic connections
- The HydraLock vise has a total stroke of 3/8" max., and a maximum jaw opening of 3/16" per side
- All TOOLEX SnapLock Jaws mount to the hydraulic vise
- Through hole mounting and side rails allow for simple vise mounting
- The hydraulic vise segment easily retrofits to our manual RWS4002 and RWS6002 vise
- For hydraulic accessories, see page 170

Specifications

Vise Size	Part Number	A	B	C	D	E	F	G	P
4"	HWS4002	2.500	4.000	17.250	3.000	3.000	9.000	10.000	1.250
6"	HWS6002	3.250	6.000	21.875	4.000	5.000	12.000	12.000	1.375

Vise Size	Net Weight	Maximum Clamping Pressure
4"	40 lbs.	4,000 lbs.
6"	94 lbs.	12,000 lbs.

For mounting hole dimensions, see page 168

HydraLock Series Vise with Machinable Soft Jaws

- Body manufactured from 80,000 PSI ductile cast iron
- Ways are flame hardened to 40 R/C maximum
- For vise specifications and jaw capacities see above and page 171.
- Includes handle and tool kit (pry wrench and hex wrenches)
- Package includes Double Station Hydraulic Vise and a 3-piece Machinable Soft Jaw Set.
- See page 16 for SnapLock Machinable Fixture Jaws specifications.

Vise Size	Part Number	Includes
4"	HWS4002SJ	Vise, 3-pc. machinable jaw set (SSJ4000)
6"	HWS6002SJ	Vise, 3-pc. machinable jaw set (SSJ6000)

HydraLock Series Vise with Hard Jaws

- Body manufactured from 80,000 PSI ductile cast iron
- Ways are flame hardened to 40 R/C maximum
- Vise specifications and jaw capacities shown above and on page 171.
- Includes handle and tool kit (pry wrench and hex wrenches)
- Standard Hard Jaws specifications on page 192.
- Outside Carrier Jaws manufactured from high quality aluminum material, see page 179.
- Package includes Double Station Hydraulic Vise, 2 Carrier Jaws and a 3-piece Standard Hard Jaw Set.

Vise Size	Part Number	Includes
4"	HWS4002HJ	Vise, 2-pc. carrier jaw set (SCJ4000), 3-pc. hard jaw set (SHJ4035)
6"	HWS6002HJ	Vise, 2-pc. carrier jaw set (SCJ6000), 3-pc. hard jaw set (SHJ6035)

TOOLEX Hydraulic Vise Power Sources

The TOOLEX 4" Hydraulic Vises are designed to operate on all types of power sources. Toolex Standard Booster Packages and Portable Units offer ease of operation in an economical energy efficient system.

Air/Oil Power Source Part Number: HPS9461

- 55:1 ratio
- Self bleeding feature
- 5000# out put



Air Pilot Operated Check Valve Kit Part Number: HPS9473

- Locks pressure in working circuit
- Free reverse flow
- Includes required installation components

Vise Clamping Kit Part Number: HPS9472



Contains all components to power and control vise(s)

Includes:

- Booster
- Valve
- Regulator
- All fittings, hoses and gages

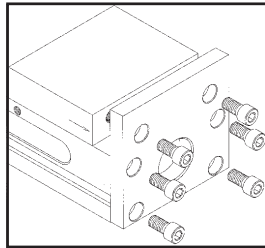
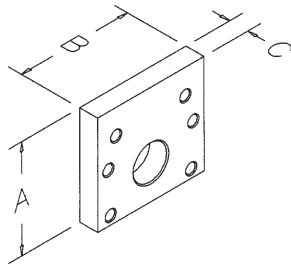
Deluxe Portable Power Pack with Pilot Operated Check Valve Part Number: HPS9474

- Completely assembled
- Portable
- Self bleeding
- Fast setup



Specially Formulated Hydraulic Oil – QT Part Number: HPS0801

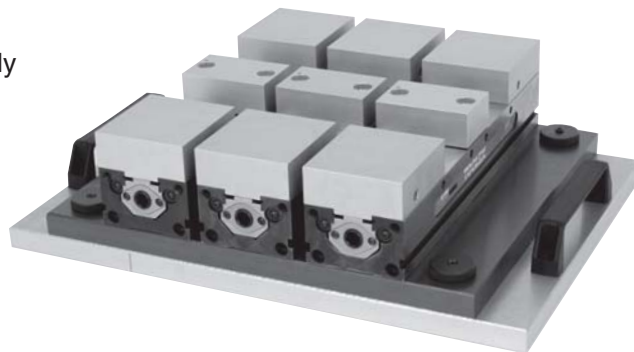
Single Station Conversion Plate for ReLock 2-Station Vise













Vise Size	Part Number	A	B	C
4"	RCP4002	4.163	4.000	.720
6"	RCP6002	5.538	6.000	.720
8"	RCP8002	7.093	8.000	.970

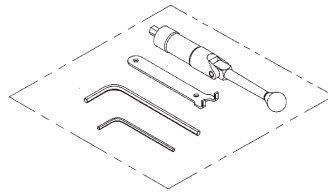
- The Single Station Conversion Plate used in conjunction with SnapLock Carrier Jaw allows the system to be converted from double to single station.
- Capacities and configuration examples are illustrated below.

The compact design of the Toolex Vise allows you to mount the vises very closely to each other without interference. The SnapLock line of jaws allows you to literally “snap” jaws and accessories on and off the vise without the use of bolts or pins. For applications requiring a subplate or fixture plate, please fill out the Plate Quotation Worksheet found on page 204.

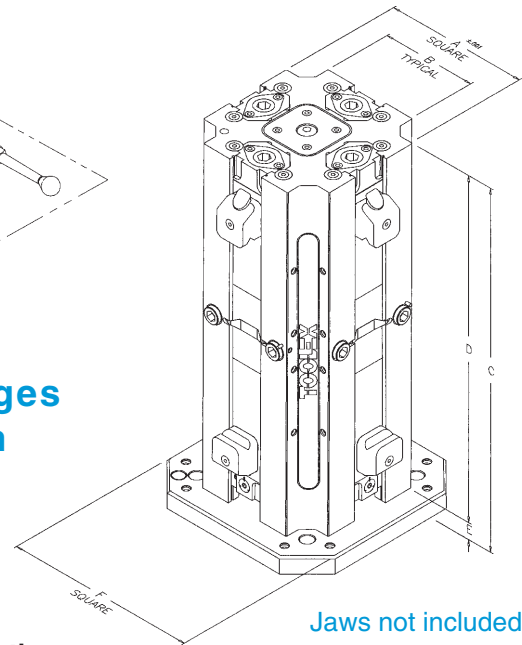


MACHINABLE JAWS	4"	6"	8"	CARRIER & HARD JAWS	4"	6"	8"
	4.125	5.125	7.625		3.000	4.000	6.000
	6.875	9.060	12.812		7.375	9.500	13.250
	9.500	11.625	17.125		7.250	9.500	14.000
	12.250	15.562	22.312		11.625	15.000	21.250
	15.000	19.500	27.500		16.000	20.500	28.500

VISES AND ACCESSORIES



Starter Packages available on page 195



Jaws not included

Specifications

Vise Size	Net Weight	Clamping Pressure	Foot Pound Recommendation
4"	150 lbs.	0 to 6,000 lbs.	45-50
6"	280 lbs.	0 to 12,000 lbs.	100-110
8"	750 lbs.	0 to 16,000 lbs.	180-190

- Body manufactured from 80,000 PSI ductile cast iron
- Ways are flame hardened to 40 R/C maximum
- Vise Capacities shown on page 171
- Baseplates are designed to adapt to many machine table sizes – see page 196-197 for specs
- Vise columns can be located on a pallet using edge locating with shims or spacers (not included)

Vise Size	Part Number	A	B	C	D	E	F
4"	RWS4008	7.000	4.000	17.90	16.750	1.150	10.750
6"	RWS6008	9.000	6.000	22.65	21.250	1.400	14.000
8"	RWS8008	12.000	8.000	31.10	29.500	1.600	18.000

- Replacement parts available on pages 200-201

Eight Station Vise with Machinable Soft Jaws

- Includes handle and tool kit (pry wrench & hex wrenches)
- Package includes Eight-Station Vise and four 3-piece Machinable Soft Jaw Sets
- See page 178 for SnapLock Machinable Fixture Jaw specifications

Vise Size	Package Number	Package Contents
4"	RWS4008SJ	1-RWS4008 4-SSJ4000
6"	RWS6008SJ	1-RWS6008 4-SSJ6000
8"	RWS8008SJ	1-RWS8008 4-SSJ8000



Eight Station Vise with Hard Jaws

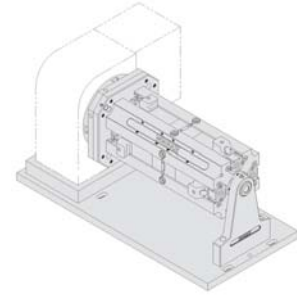
- Standard Hard Jaws specifications shown on page 192
- Outside Carrier Jaws manufactured from high quality aluminum material, see page 179
- Package includes Eight-Station Vise, eight Carrier Jaws and four 3-piece Standard Hard Jaw Sets

Vise Size	Package Number	Package Contents
4"	RWS4008HJ	1-RWS4008 4-SCJ4000 4-SHJ4035
6"	RWS6008HJ	1-RWS6008 4-SCJ6000 4-SHJ6035
8"	RWS8008HJ	1-RWS8008 4-SCJ8000 4-SHJ8035

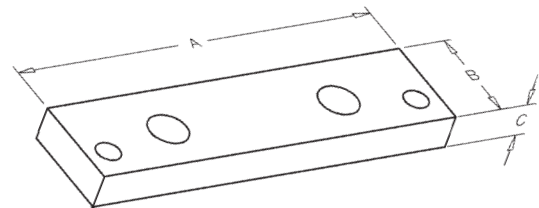


RELOCK 8 STATION WORKHOLDING SYSTEM

The ReLock 8 -Station's compact and lightweight unibody design is perfect for horizontal machining centers. The unibody is manufactured from 80,000 PSI Ductile Cast Iron, and the ways are flamed hardened and precision ground to accuracies of $\pm .0005"$. The ReLock-8 is also ideal for use with rotary indexers in vertical machining center applications. For special requirements please use the ReLock-8 Indexer Assembly Quotation Worksheet on page 205.



Single Station Conversion Plate for ReLock 8-Station Vise



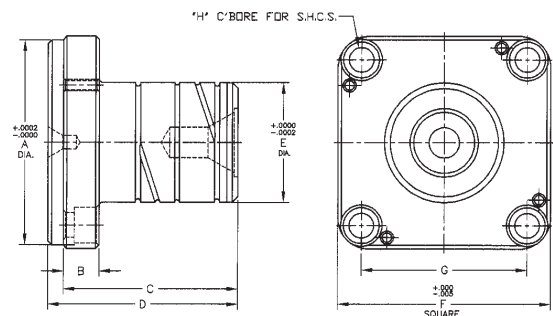
- The Single Station Conversion Plate used in conjunction with SnapLock Carrier Jaw allows each station to be converted from double to single station
- Capacities and configuration examples are illustrated on page 171
- See page 197 for mounting instructions

Vise Size	Part Number	A	B	C
4"	RCP4008	5.50	1.350	.720
6"	RCP6008	8.00	2.000	.720
8"	RCP8008	10.25	2.500	.970

Re-Lock-8 Support/Alignment Nose

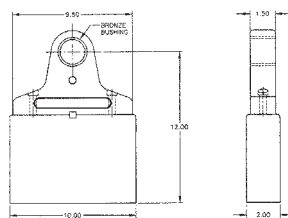
Optional Support Nose works in conjunction with the Support Bracket and Adapter Plate for long lasting precision to $.001"$ T.I.R.

Vise Size	Part Number	A	B	C	D	E	F	G	H
4"	RSN4008	2.750	.469	2.750	3.000	1.9672	2.875	2.207	5/16-18
6"	RSN6008	3.375	.593	2.875	3.125	1.9672	3.500	2.726	3/8-16
8"	RSN8008	5.125	.718	3.000	3.250	1.9672	5.250	4.187	1/2-13



Re-Lock-8 Support Bracket Part Number RSB4000

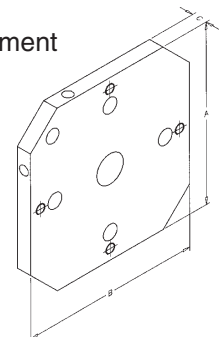
- Optional ReLock Support Bracket incorporates a bronze bushing and grease fitting for durability.
- Customer must modify base to required height.

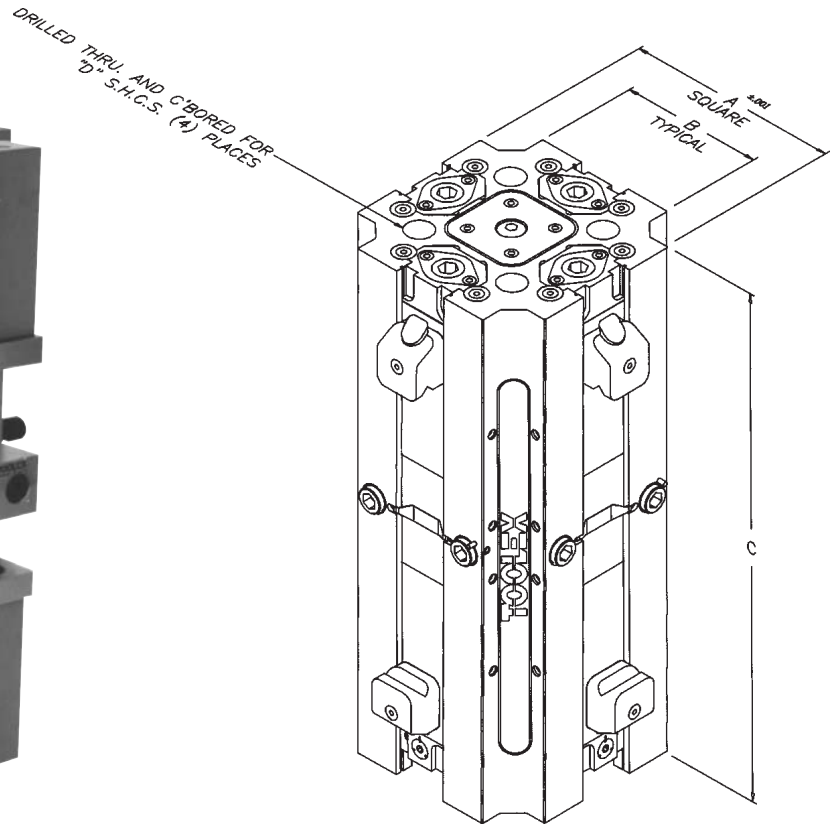


Re-Lock-8 Adapter Plate

Optional Adapter Plate simplifies attachment of a ReLock-8 to either a pallet or an indexer. Unique alignment feature allows the ReLock-8 to be oriented to indexing, quickly and accurately.

Vise Size	Part Number	A	B	C
4"	RAP4008	9.000	9.000	.750
6"	RAP6008	12.000	12.000	1.000





- Designed for machining centers with small work envelopes.
- Body manufactured from 80,000 PSI ductile cast iron.
- Ways are flame hardened to 40 R/C maximum.
- Adaptable baseplate. (NOT included)
- Through column mounting holes are included to mount directly to the pallet of an HMC, without the need for a baseplate.
- Mounting kit included.
- Clamping pressure = 0 to 6,000 lbs.
- Recommended foot pounds = 45-50.

Part Number	A	B	C	Package Contents
RWS40S8	7.000	4.000	13.90	1-RWS40S8 no jaws
RWS40S8SJ	7.000	4.000	13.90	1-RWS40S8 4-SSJ4000
RWS40S8HJ	7.000	4.000	13.90	1-RWS40S8 4-SCJ4000 4-SHJ4035

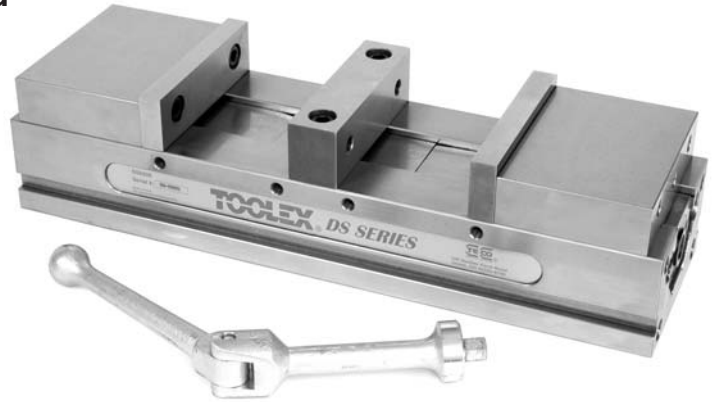
WISE CAPACITIES

MACHINABLE JAWS		CARRIER & HARD JAWS	
	2.700		1.575
	5.450		2.950
	6.650		4.400
	9.400		8.775
	12.150		13.150

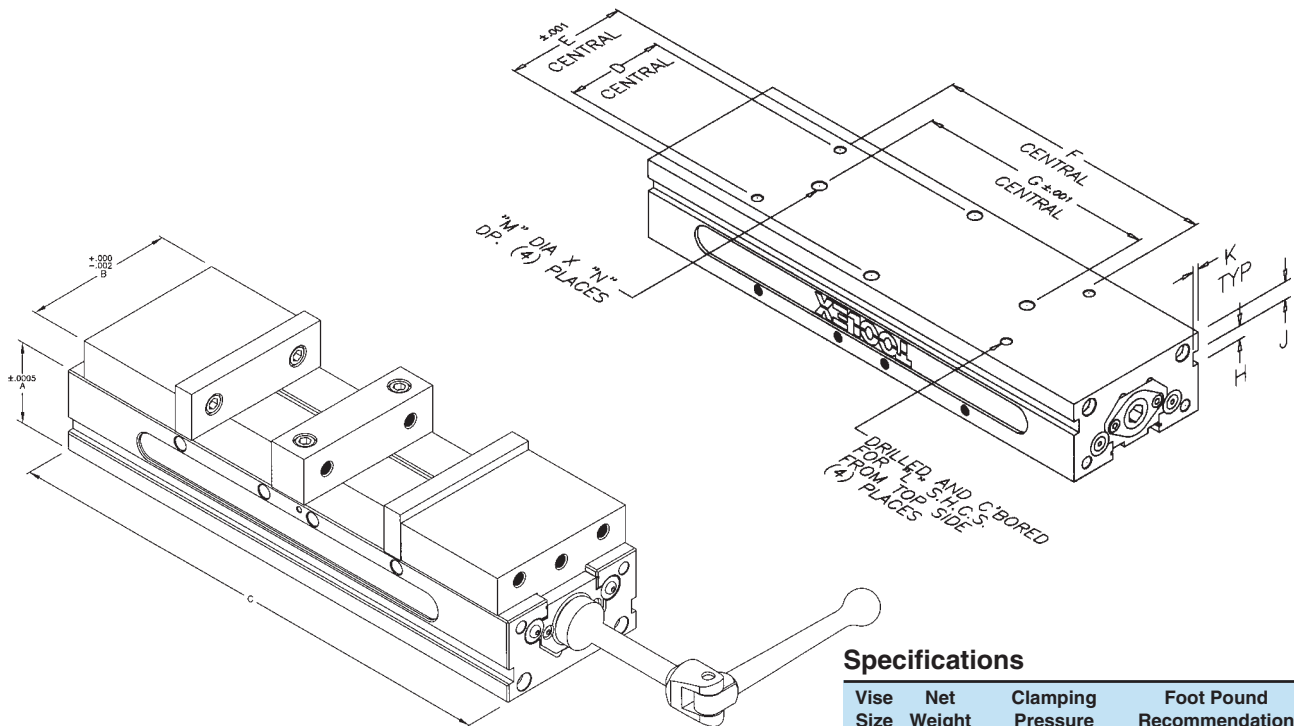
TOOLEX® DS Series - 6" Double Station Hard Jaw Vise

Includes 6" Vise,
2-piece cast iron Carrier Jaw Set and
3-piece Standard Hard Jaw Set

Made in USA



- Body manufactured from 80,000 PSI ductile cast iron
- Ways are flame hardened to 40 R/C maximum
- Includes manual off-set mechanism that has maximum .250" offset setting
- Standard Hard Jaw Set made of steel
- Carrier jaws will accept both AccuSnap and QuickChange master jaws



Specifications

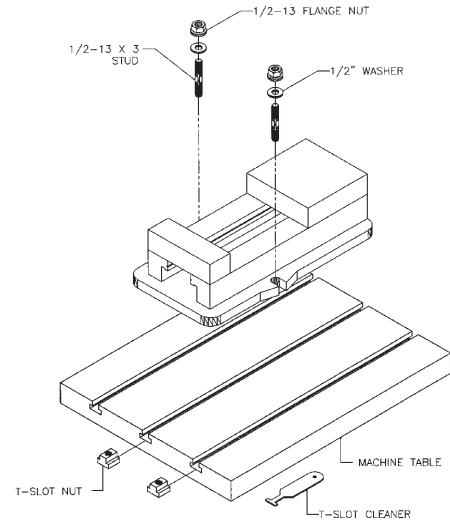
Vise Size	Net Weight	Clamping Pressure	Foot Pound Recommendation
6"	110 lbs.	0 to 12,000 lbs.	100-110

Vise Size	Part Number	A	B	C	D	E	F	G	H	J	K	L	M	N
6"	DS6000	3.250	6.000	20.500	4.000	5.000	12.000	10.000	.562	.750	.250	3/8-16	.501	.630

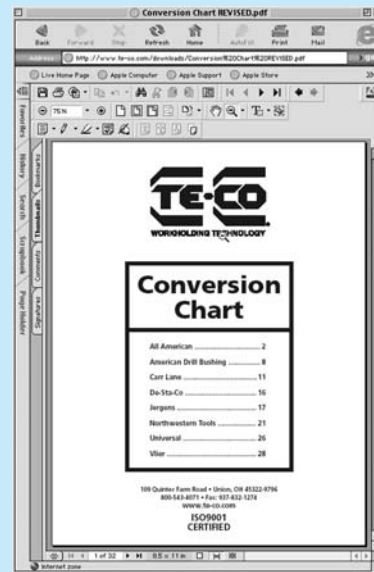
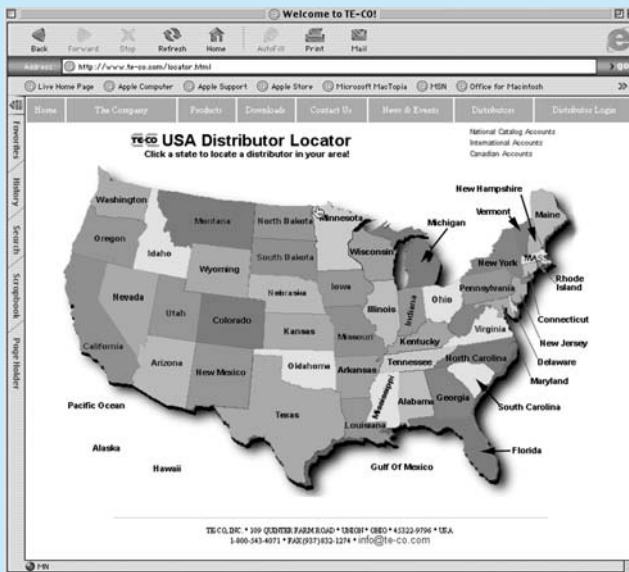
VICES AND
ACCESSORIES

Vise Mounting Kit Part No. 90442

- The Vise Mounting Kit is designed for 6" Vises.
- Kit contains:
 - 2 - 1/2 x 3 Stud
 - 2 - 1/2 x 5/8 T-Nut
 - 2 - 1/2 - 13 Flange Nut
 - 2 - 1/2 Flat Washer
 - 1 - T-Slot Cleaner

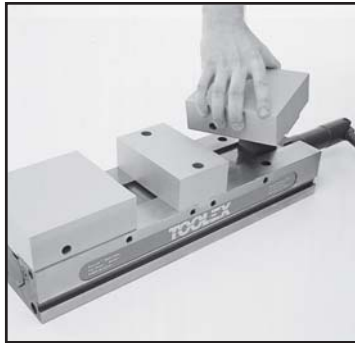


Visit our website at www.te-co.com

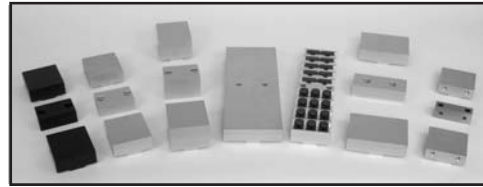


It's the fast and easy way to:

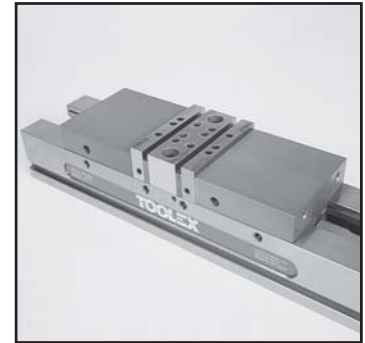
- Download 2D & 3D Solid CAD files
- Search our catalog by part number or description
- Locate your local TE-CO representative
- Download price lists & conversion charts
- Download and view our catalog
- Keep up-to-date with the most current product information



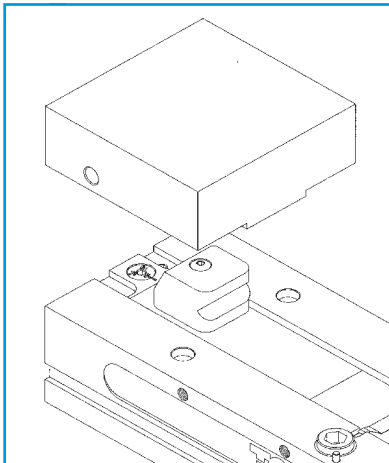
SNAPLOCK MACHINABLE, REVERSIBLE FIXTURE JAWS
Snaplock Machinable Fixture Jaws can be attached, reversed, removed or indexed in a matter of seconds.



Snaplock Machinable Fixture Jaws are extremely versatile, allowing endless customization possibilities. Jaws are manufactured from high quality aluminum.

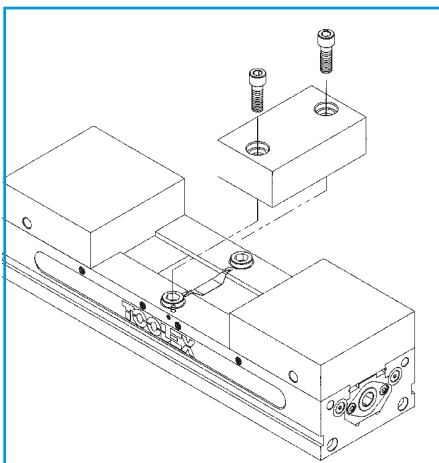
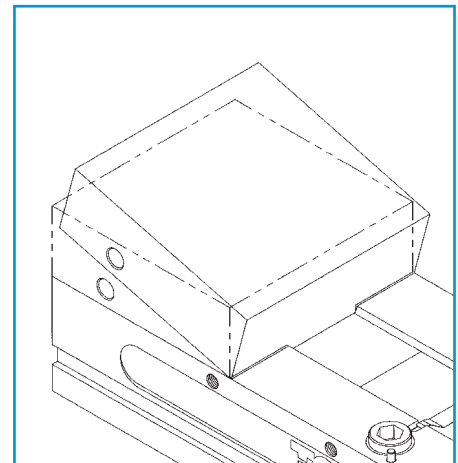


SNAPLOCK CARRIER JAWS
SnapLock Carrier Jaws allow mounting of AccuSnap and Quick-Change Master Jaws or standard bolt on jaws using an industry standard bolt size and pattern.



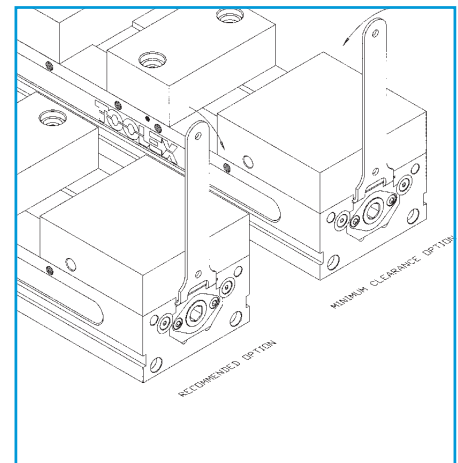
To use the SnapLock Jaw System, simply align the jaw over the appropriate ReLock knuckle.

Place the front edge of the jaw over the knuckle and press firmly down on the rear of the jaw to “snap” into place.

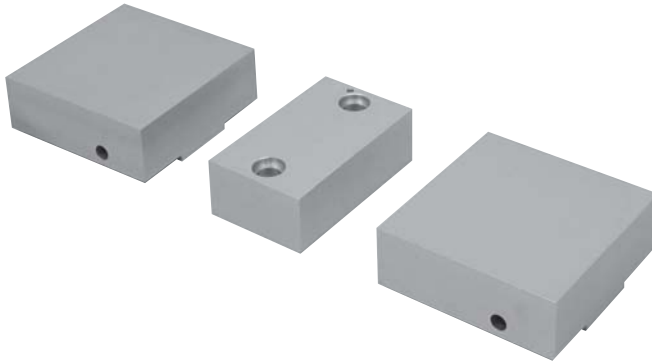


Finally, align the center over corresponding mounting and locating holes and fasten down with socket head cap screws.

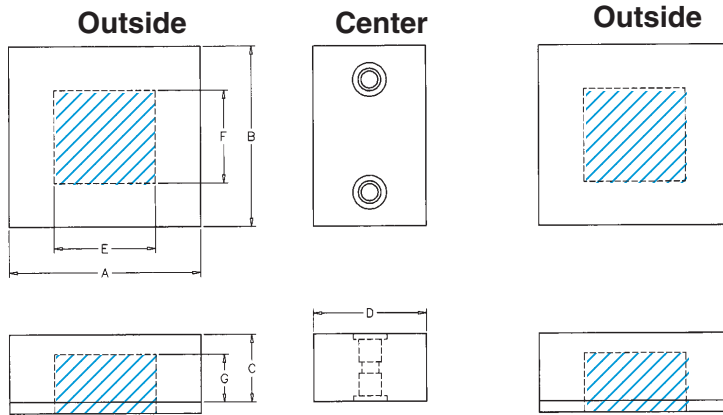
For jaw removal, simply unbolt the center jaw and slip the provided pry wrench in slots of outside jaws as shown and pull back or side-ways on handle.



SnapLock Machinable Fixture Jaws

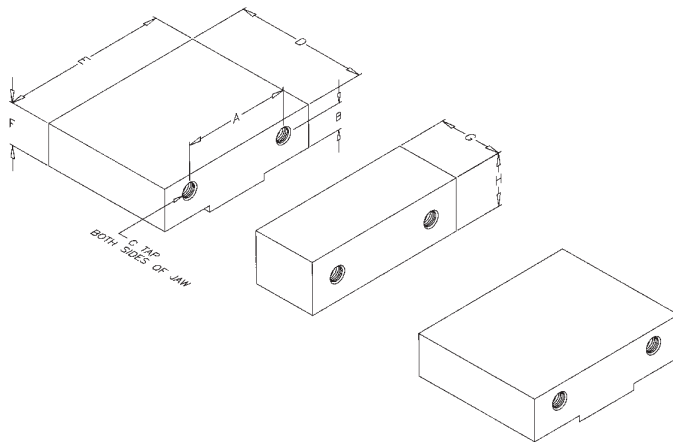


- Manufactured from high quality aluminum, steel, and 4140 steel
- Jaws are reversible for additional workpiece set-up
- SnapLock Jaws are used only with the Relock® system.

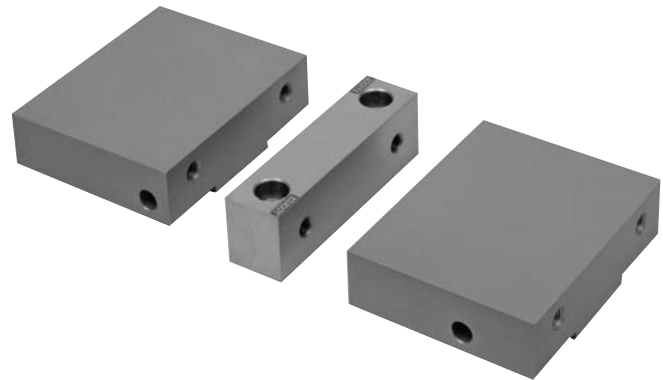


▣ Denotes non-machinable areas

Vise Size	Part Desc.	PART NUMBER			A	B	C	D	E	F	G	Style
		Aluminum	1018 Steel	4140 Steel								
4"	3 pc. Set	SSJ4000	SSJ4020	SSJ4140	4.250	3.94	1.500	2.500	2.250	2.060	1.060	Standard
	1 Center	SSJ4100	SSJ4021	SSJ4023	---	3.94	1.500	2.500	---	---	---	
	1 Outside	SSJ4200	SSJ4022	SSJ4024	4.250	3.94	1.500	---	2.250	2.060	1.060	
4"	3 pc. Set	SSJ4275	---	---	4.250	3.94	2.75	2.500	2.250	2.060	1.060	Tall
	1 Center	SSJ4075	---	---	---	3.94	2.75	2.500	---	---	---	
	1 Outside	SSJ4175	---	---	4.250	3.94	2.75	---	2.250	2.060	1.060	
4"	3 pc. Set	SSJ4006	---	---	4.250	5.94	1.500	2.500	---	---	---	Wide
	1 Center	SSJ4016	---	---	---	5.94	1.500	2.500	---	---	---	
	1 Outside	SSJ4026	---	---	4.250	5.94	1.500	---	2.250	2.060	1.060	
6"	3 pc. Set	SSJ6000	SSJ6020	SSJ6140	5.812	5.94	2.000	3.500	3.063	2.810	1.280	Standard
	1 Center	SSJ6100	SSJ6021	SSJ6023	---	5.94	2.000	3.500	---	---	---	
	1 Outside	SSJ6200	SSJ6022	SSJ6024	5.812	5.94	2.000	---	3.063	2.810	1.280	
6"	3 pc. Set	SSJ6325	---	---	5.812	5.94	3.25	3.500	3.063	2.810	1.280	Tall
	1 Center	SSJ6125	---	---	---	5.94	3.25	3.500	---	---	---	
	1 Outside	SSJ6225	---	---	5.812	5.94	3.25	---	3.063	2.810	1.280	
6"	3 pc. Set	SSJ6008	---	---	5.812	7.94	2.000	3.500	3.063	2.810	1.280	Wide
	1 Center	SSJ6108	---	---	---	7.94	2.000	3.500	---	---	---	
	1 Outside	SSJ6208	---	---	5.812	7.94	2.000	---	3.063	2.810	1.280	
8"	3 pc. Set	SSJ8000	SSJ8020	SSJ8140	7.500	7.94	2.500	4.500	3.125	2.625	1.500	Standard
	1 Center	SSJ8100	SSJ8021	SSJ8023	---	7.94	2.500	4.500	---	---	---	
	1 Outside	SSJ8200	SSJ8022	SSJ8024	7.500	7.94	2.500	---	3.125	2.625	1.500	
8"	3 pc. Set	SSJ8375	---	---	7.500	7.94	3.75	4.500	3.125	2.625	1.500	Tall
	1 Center	SSJ8175	---	---	---	7.94	3.75	4.500	---	---	---	
	1 Outside	SSJ8225	---	---	7.500	7.94	3.75	---	3.125	2.625	1.500	
8"	3 pc. Set	SSJ8010	---	---	7.500	9.94	2.50	4.500	3.125	2.625	1.500	Wide
	1 Center	SSJ8110	---	---	---	9.94	2.50	4.500	---	---	---	
	1 Outside	SSJ8210	---	---	7.500	9.94	2.50	---	3.125	2.625	1.500	



SnapLock Carrier Jaws



- Outside Jaws manufactured from high quality aluminum material and center jaw from steel
- Carrier Jaws are to be used in conjunction with AccuSnap (page 181) & QuickChange (page 188) Master Jaws

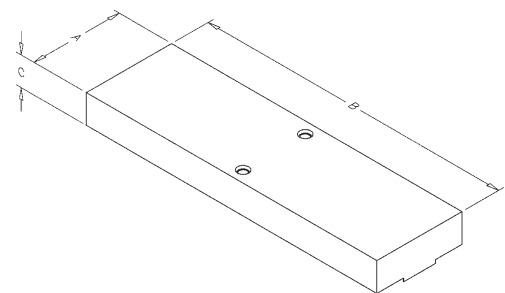
- Outside jaws can be used in conjunction with the Single Station Conversion Plate (pages 171 and 173)
- SnapLock Jaws are used only with the Relock® system
- Two socket head cap screws included with each outside jaw

Vise Size	Part Desc.	PART NUMBER		A	B	C	D	E	F	G	H
		Aluminum	Steel								
4"	2 Outside	SCJ4000	SCJ4020	2.500	.687	3/8-16	3.812	3.94	1.12	---	---
	1 Center	---	SCJ4030	2.500	.687	3/8-16	---	3.94	1.12	1.250	1.350
	3 pc. Set	SCJ4035	SCJ4025	2.500	.687	3/8-16	3.812	3.94	1.12	1.250	1.350
6"	2 Outside	SCJ6000	SCJ6020	3.875	.937	1/2-13	4.750	5.94	1.52	---	---
	1 Center	---	SCJ6030	3.875	.937	1/2-13	---	5.94	---	1.500	1.850
	3 pc. Set	SCJ6035	SCJ6025	3.875	.937	1/2-13	4.750	5.94	1.52	1.500	1.850
8"	2 Outside	SCJ8000	SCJ8020	4.750	1.218	5/8-11	6.125	7.94	2.12	---	---
	1 Center	---	SCJ8030	4.750	1.218	5/8-11	---	7.94	---	1.980	2.35
	3 pc. Set	SCJ8035	SCJ8025	4.750	1.218	5/8-11	6.125	7.94	2.12	1.980	2.35



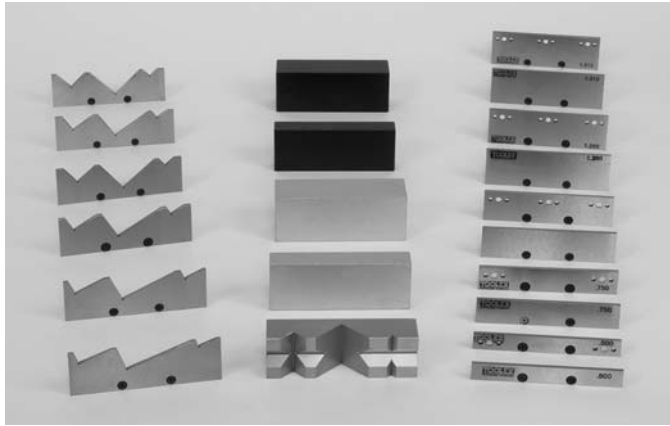
Vise not included

SnapLock Fixture Plates

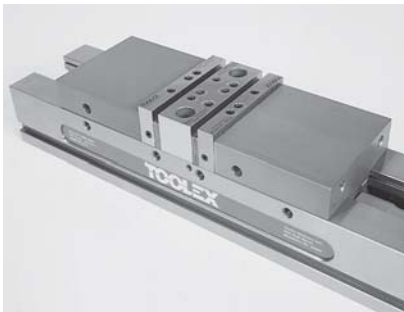


- Manufactured from high quality aluminum material.
- Ideal for holding many small parts or workpieces with difficult clamping or locating points.
- SnapLock Plates are used only with the Relock® system.

Vise Size	Part Number	A	B	C
4"	SFP4000	4.000	16.000	1.500
	SFP4001	6.000	16.000	1.500
6"	SFP6000	6.000	20.500	2.000
	SFP6001	8.000	20.500	2.000
8"	SFP8000	8.000	28.500	2.500
	SFP8001	10.000	28.500	2.500



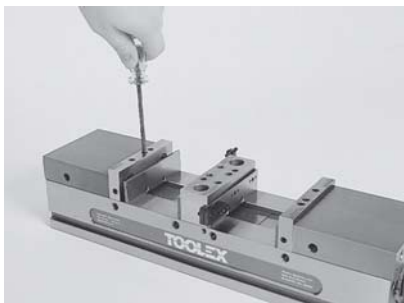
- **Fast, accurate and versatile**
- **Reduces set up time drastically**
- **\pm .0002 repeatability**
- **Adaptable to most vise systems**



Simply attach the AccuSnap Master Jaws to your Carrier Jaw System using the industry standard bolt pattern.



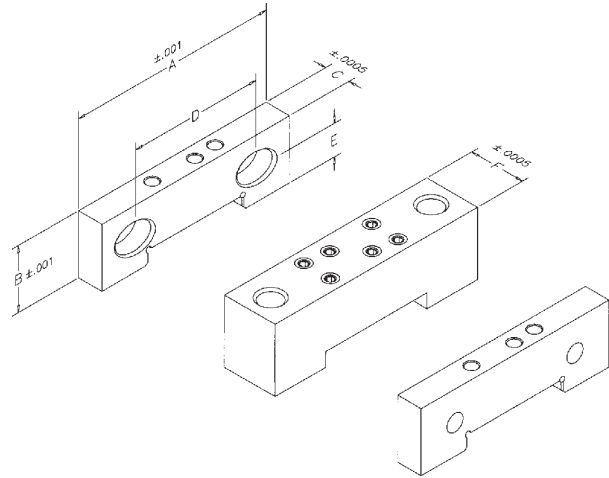
Snap in the parallels or soft jaws that you require for your setup and begin machining. Two lock screws are provided for extra holding assurance – but are not necessary to hold parallels into place. Do not over-tighten lock screws.



When finished with your job, unlock parallels if needed, turn the kick out screw to eject the jaw or parallel, and you are ready to begin the process again for your next job.

Before mounting AccuSnap Master Jaws, thoroughly inspect, clean, and remove any burrs or chips from mounting surface.

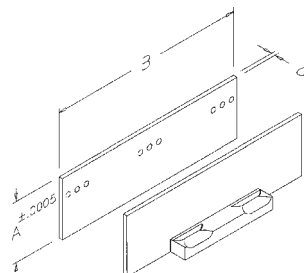
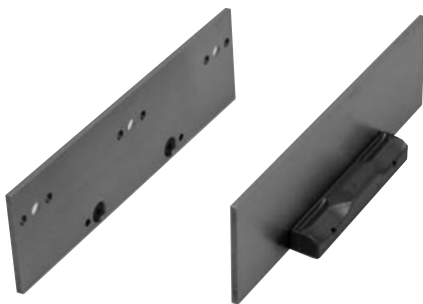
AccuSnap Master Jaws



- For ReLock Applications, AccuSnap Master Jaws mount to the SnapLock Carrier Jaws and accept all AccuSnap Jaw Components
- Install AccuSnap Master Jaws to SnapLock Carrier Jaws on vise for squareness
- Replacement parts are available on 202
- Adaptable to most vise jaw systems
- 3 Piece Set includes wrench

Vise Size	Part Desc.	PART NUMBER	A	B	C	D	E	F
4"	3 pc. Set	AMJ4035	3.980	1.350	.560	2.500	.687	---
	2 Outside	AMJ4000	3.980	1.350	.560	2.500	.687	---
	1 Center	AMJ4030	3.980	1.350	---	2.500	.687	1.250
6"	3 pc. Set	AMJ6035	5.980	1.850	.750	3.875	.937	---
	2 Outside	AMJ6000	5.980	1.850	.750	3.875	.937	---
	1 Center	AMJ6030	5.980	1.850	---	3.875	.937	1.500
8"	3 pc. Set	AMJ8035	7.980	2.350	1.125	4.750	1.218	---
	2 Outside	AMJ8000	7.980	2.350	1.125	4.750	1.218	---
	1 Center	AMJ8030	7.980	2.350	---	4.750	1.218	2.000

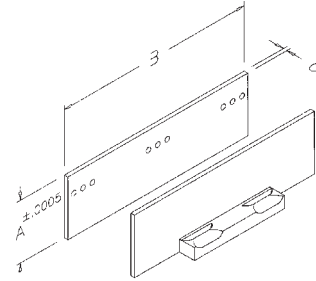
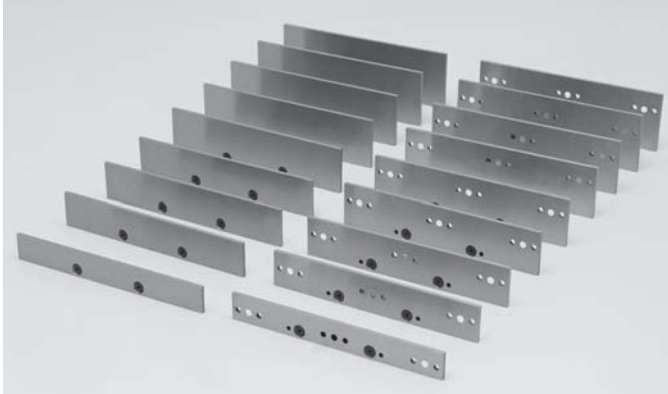
AccuSnap Individual Parallel Sets



- Use in conjunction with AccuSnap Master Jaws (above)
- Parallels "snap" into position quickly and easily
- Parallels are ejected from the Master Jaws via a patented kick out pawl assembly
- Can be used in conjunction with AccuSnap Modular Workstops shown on page 185
- Expanded Parallel Sets available on page 182
- Packaged two to a set

Vise Size	PART NUMBER	A	B	C
4"	AIP4001	.500	3.980	.118
	AIP4002	.625	3.980	.118
	AIP4003	.750	3.980	.118
	AIP4004	.875	3.980	.118
	AIP4005	1.000	3.980	.118
	AIP4006	1.125	3.980	.118
	AIP4007	1.250	3.980	.118
	AIP4008	1.312	3.980	.118
6"	AIP6001	.750	5.980	.118
	AIP6002	1.000	5.980	.118
	AIP6003	1.125	5.980	.118
	AIP6004	1.250	5.980	.118
	AIP6005	1.375	5.980	.118
	AIP6006	1.500	5.980	.118
	AIP6007	1.625	5.980	.118
	AIP6008	1.750	5.980	.118
	AIP6009	1.812	5.980	.118
8"	AIP8001	1.000	7.980	.118
	AIP8002	1.250	7.980	.118
	AIP8003	1.375	7.980	.118
	AIP8004	1.500	7.980	.118
	AIP8005	1.625	7.980	.118
	AIP8006	1.750	7.980	.118
	AIP8007	1.875	7.980	.118
	AIP8008	2.000	7.980	.118
	AIP8009	2.125	7.980	.118
	AIP8010	2.250	7.980	.118

AccuSnap Parallel Kits



- AccuSnap Parallels are to be used in conjunction with AccuSnap Master Jaws shown on page 181
- Parallels “snap” into position quickly and easily
- Parallels are ejected from the Master Jaws via a kick out pawl assembly
- Can be used in conjunction with AccuSnap Modular Workstops shown on page 185
- Individual Parallel Sets available on page 181
- Holder racks available for 4” and 6” sets on page 94

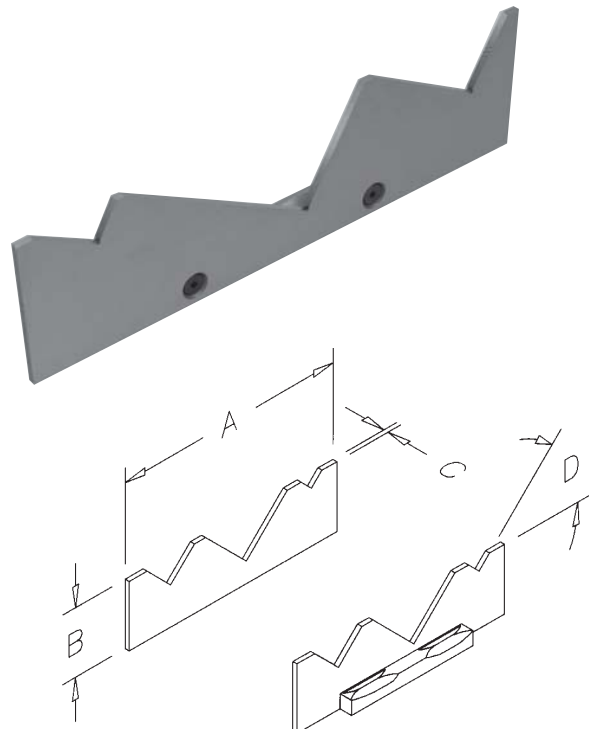
CONTAINS 2 OF EACH

Vise Size	PART NUMBER		A			B	C
	Basic	Advanced	Basic	Advanced	Advanced		
4"	APS4000	APS4001	.500	.500	1.000	3.980	.118
			.750	.625	1.125		
			1.000	.750	1.250		
			1.250	.875	1.312		
			1.312				
6"	APS6000	APS6001	.750	.750	1.500	5.980	.118
			1.000	1.000	1.625		
			1.250	1.125	1.750		
			1.500	1.250	1.812		
			1.750	1.375			
8"	APS8000	APS8001	1.000	1.000	1.750	7.980	.118
			1.250	1.250	1.875		
			1.500	1.375	2.000		
			1.750	1.500	2.125		
			2.000	1.625	2.250		
			2.250				

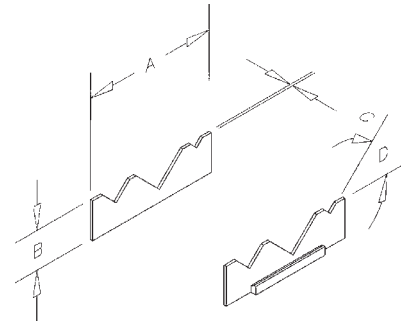
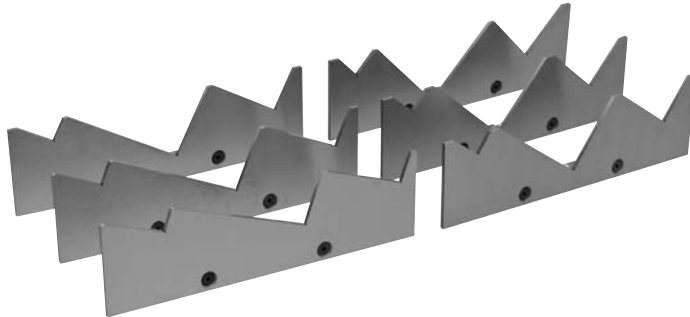
AccuSnap Mill Angles

- AccuSnap Mill Angles are designed to be used with the AccuSnap Master Jaws shown on page 181.
- AccuSnap Mill Angle Parallel Sets are on page 183.
- Sold as individual units or matched sets.

Vise Size	PART NUMBER		A	B	C	D (Degree)
	Individual	Matched Sets				
4"	AMA4020	AMM4020	4.000	1.240	.118	20
	AMA4025	AMM4025				25
	AMA4030	AMM4030				30
	AMA4035	AMM4035				35
	AMA4040	AMM4040				40
AMA4045	AMM4045	45				
6"	AMA6020	AMM6020	6.000	1.740	.118	20
	AMA6025	AMM6025				25
	AMA6030	AMM6030				30
	AMA6035	AMM6035				35
	AMA6040	AMM6040				40
AMA6045	AMM6045	45				
8"	AMA8020	AMM8020	8.000	2.230	.118	20
	AMA8025	AMM8025				25
	AMA8030	AMM8030				30
	AMA8035	AMM8035				35
	AMA8040	AMM8040				40
AMA8045	AMM8045	45				



AccuSnap Mill Angle Kits

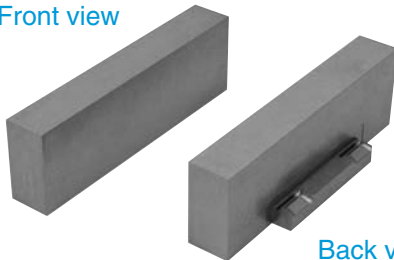


- Designed to be used with the AccuSnap Master Jaws on page 181
- AccuSnap Individual Mill Angles are on page 182

Vise Size	Part Number	A	B	C	(1 of ea. degree)		
					20	25	30
4"	AMA4000	4.000	1.240	.118	35	40	45
6"	AMA6000	6.000	1.740	.118	20	25	30
8"	AMA8000	8.000	2.230	.118	35	40	45

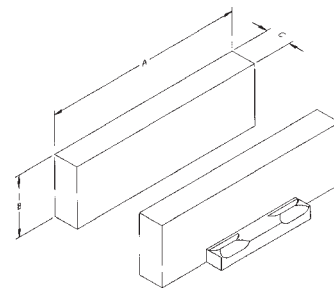
AccuSnap Machinable Fixture Jaws

Front view



Back view

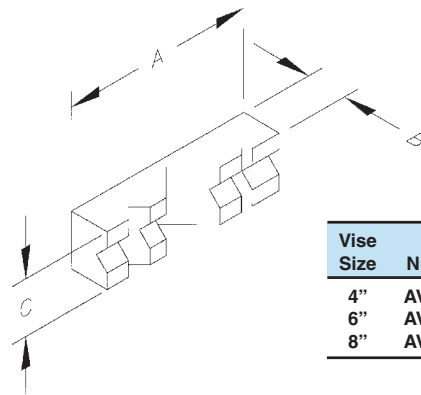
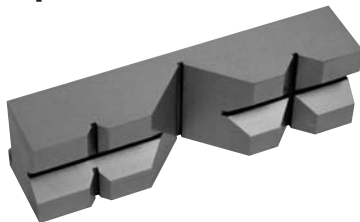
SOLD AS
INDIVIDUAL
UNITS



- Can be modified to fit your individual needs
- Use in conjunction with AccuSnap Master Jaws on page 181
- Jaws "snap" into position quickly and easily
- Jaws are ejected from the Master Jaws via a kick out pawl assembly
- Sold as individual units

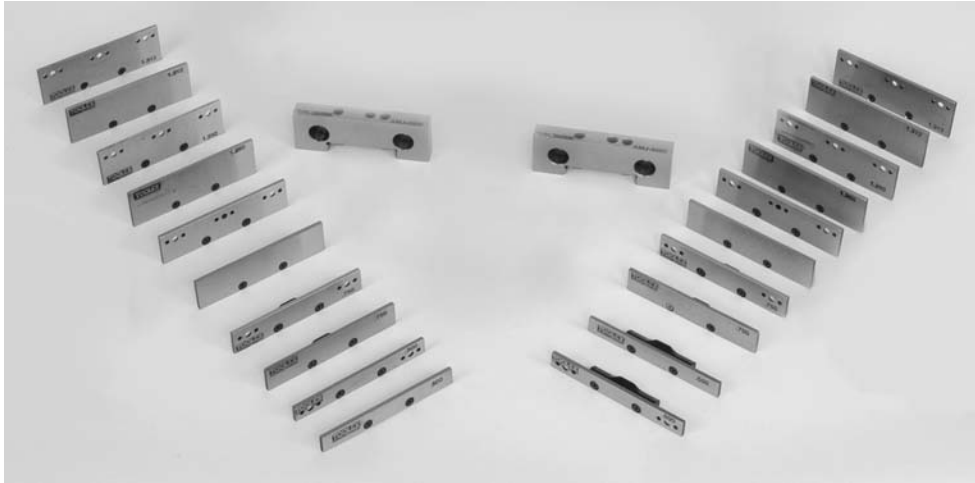
Vise Size	PART NUMBER		A	B	C
	Aluminum	Steel			
4"	ASJ4000	ASJ4020	3.980	1.500	.690
	ASJ4001	ASJ4021			
6"	ASJ6000	ASJ6020	5.980	2.000	.750
	ASJ6001	ASJ6021			
8"	ASJ8000	ASJ8020	7.980	2.500	1.250
	ASJ8001	ASJ8021			

AccuSnap "V" Jaws



- Designed to be used with AccuSnap Master Jaws on page 181
- Sold as individual units

Vise Size	Part Number	A	B	C
4"	AVJ4000	4.00	1.00	1.24
6"	AVJ6000	6.00	1.25	1.74
8"	AVJ8000	8.00	1.75	2.24



Packages Available for Single Station Vises

THREE STARTER PACKAGES AVAILABLE

Each package contains the following AccuSnap items:

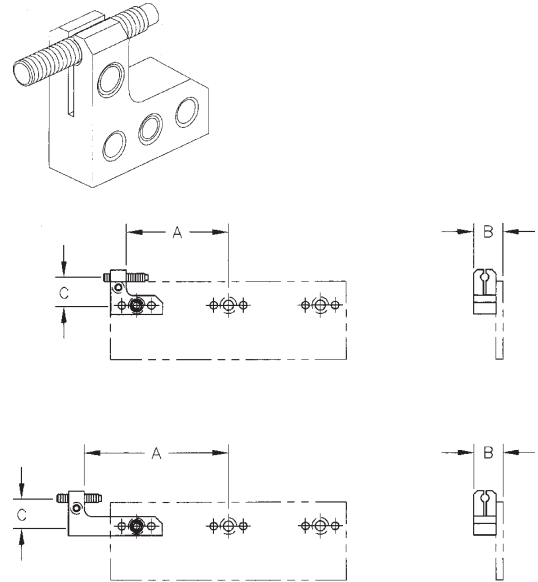
Vise Size	Part Number	Outside Master Jaws	Basic Parallel Set	Advanced Parallel Set	Mill Angle Set	Aluminum Fixture Jaws	V-Jaws	QuickStop	Holder Rack
BASIC STARTER PACKAGE									
4"	ABP4000	1 Pair	1 Set						
6"	ABP6000	1 Pair	1 Set						
8"	ABP8000	1 Pair	1 Set						
ADVANCED STARTER PACKAGE									
4"	AAP4000	1 Pair		1 Set					1 Piece
6"	AAP6000	1 Pair		1 Set					1 Piece
8"	AAP8000	1 Pair		1 Set					
TOOLMAKER/MOLDER PACKAGE									
4"	ATM4000	1 Pair		1 Set	1 Set	2 Pieces	1 Piece	1 Piece	1 Piece
6"	ATM6000	1 Pair		1 Set	1 Set	2 Pieces	1 Piece	1 Piece	1 Piece
8"	ATM8000	1 Pair		1 Set	1 Set	2 Pieces	1 Piece	1 Piece	

Packages Available for Competitor Double Station Vises

Each package contains the following AccuSnap items:

Vise Size	Part Number	Outside Master Jaws	Basic Parallel Set
4"	AAP4002	2 Pairs	2 Sets
6"	AAP6002	2 Pairs	2 Sets
8"	AAP8002	2 Pairs	2 Sets

AccuSnap Modular Workstops



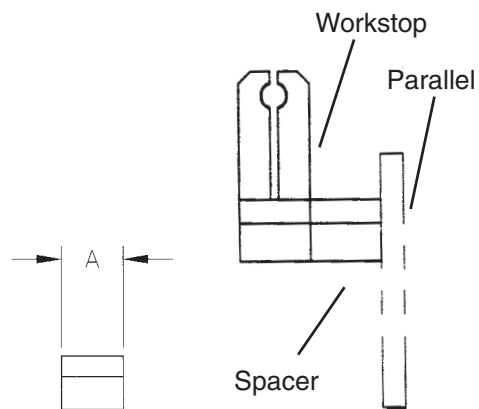
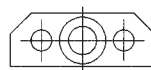
- Ideal for off-line set-up applications.
- Provides extremely accurate workpiece location and repeatability when used in conjunction with the Accu-Snap Modular Workstop Presetting Gage on page 186.
- Designed to be used with the AccuSnap Parallel sets shown on pages 181-182.
- The AccuSnap Modular Workstop is attached by inserting the locating dowel pin into desired stop location on face of parallel. Secure the workstop by tightening supplied flat head cap screw.

Vise Size	PART NUMBER		A	B	C
	Right Hand	Left Hand			
4"	AWS4000	AWS4020	1.75	.493	---
	AWS4001	AWS4021	2.50	.493	---
	AWS4010	AWS4030	1.75	.493	.969
	AWS4011	AWS4031	2.50	.493	.969
6"	AWS6000	AWS6020	2.68	.493	---
	AWS6001	AWS6021	3.68	.493	---
	AWS6010	AWS6030	2.68	.493	1.157
	AWS6011	AWS6031	3.68	.493	1.157
8"	AWS8000	AWS8020	3.50	.618	---
	AWS8001	AWS8021	5.00	.618	---
	AWS8010	AWS8030	3.50	.618	1.126
	AWS8011	AWS8031	5.00	.618	1.126

AccuSnap Spacers

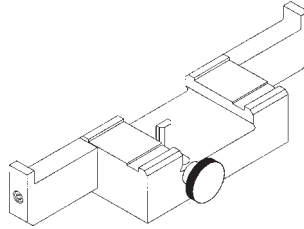
- Use in conjunction with AccuSnap Workstops
- AccuSnap Spacers allow spacing between the workstop and parallel

Vise Size	Part Number	A
4"	AWS4040	.375
6"	AWS6040	.375
8"	AWS8040	.500



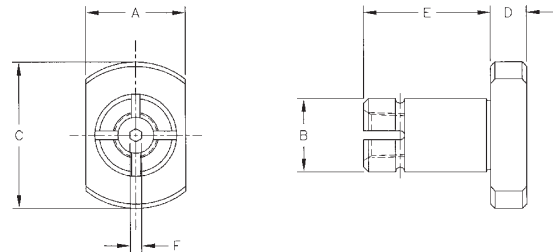
AccuSnap Presetting Gage

- Ideal for off-line set-up applications.
- Provides extremely accurate workpiece location and repeatability.
- Designed to be used with the AccuSnap Modular Workstops
- To use the Presetting Gage simply:
 - Attach AccuSnap Modular Workstop onto parallel in the desired position
 - Place the Parallel into the Presetting Gage, making sure that the parallel is properly seated against the reference edge and tighten screw clamp.
 - Loosen the adjustment screw on top of the workstop and adjust stop screw to desired position using a micrometer then, tighten lock screw.



Vise Size	Part Number
4"	AWG4000
6"	AWG6000
8"	AWG8000

Sine Fixture Keys



- Precision keys allow accurate and precise positioning of vise to machine table.

Vise Size	Part Number	A	B	C	D	E	F
4"	81651	.4995	.5004	1.00	.250	.50	.156
	81656	.687	.5004	1.00	.250	.50	.156
6"	81661	.8115	.5004	1.00	.250	.875	.156
	81666	.8115	.7504	1.812	.250	.875	.188
8"	81666	1.062	.7504	1.812	.250	.875	.188

Torque Wrench

- Torque wrenches come with the pre-set foot poundage. They provide consistent torque and prevent operators from over-tightening the vise.
- The TWR4002 has been pre-set to 55 foot pounds. The TWR6002 has foot poundage pre-set at 100 foot pounds.
- Using the torque wrenches for Toolex 8-station vises requires an adapter that fits onto the hex drive.

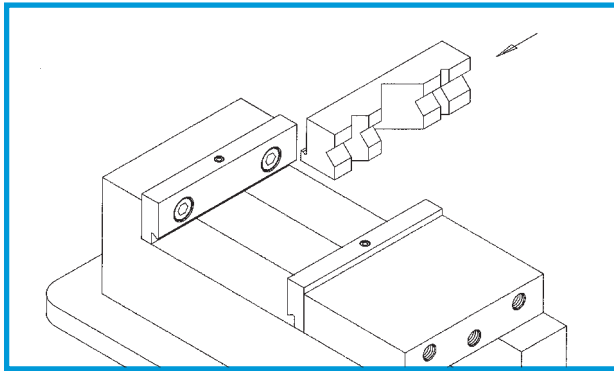


Part Number	Description
TWR4002	*Torque wrench for RWS4002 and RWS4008
TWR6002	*Torque wrench for RWS6002 and RWS6008

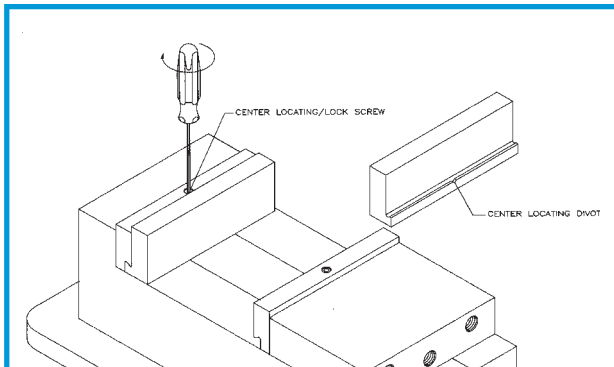
*Adapter required for 8-station vises

QUICKCHANGE[™] VISE JAW SYSTEM

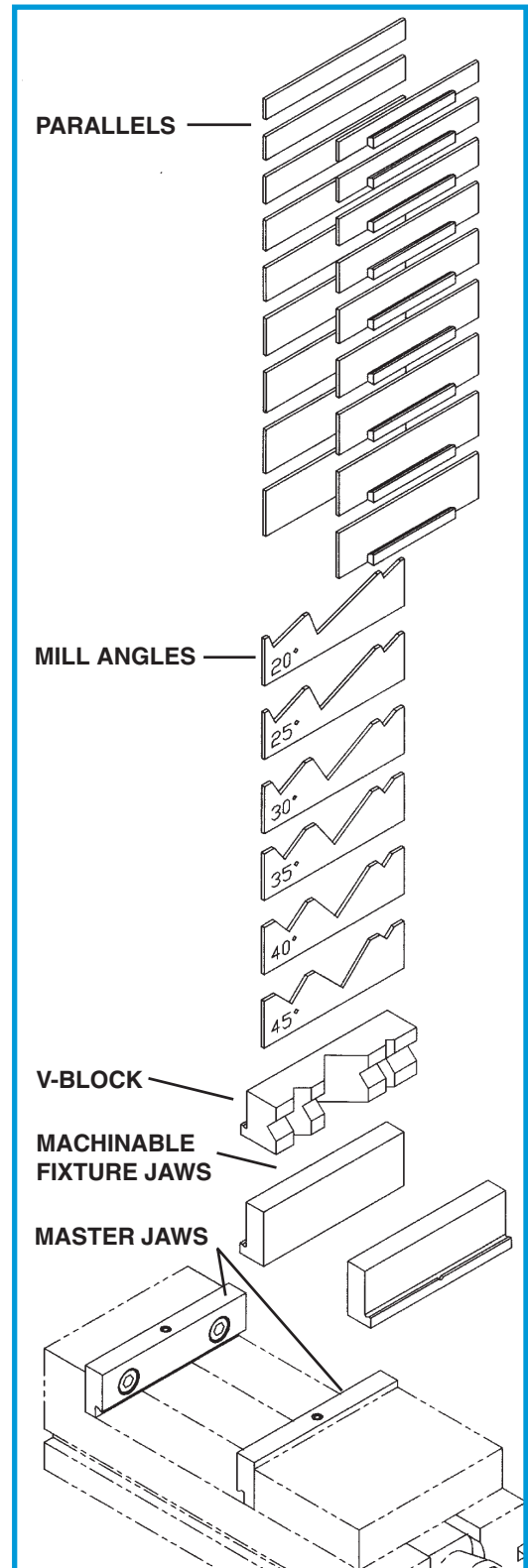
- Fast, accurate and versatile
- Drastically reduces set-up time
- Adaptable to many vise systems



To install the QuickChange System simply attach the Master Jaws to your Carrier Jaw System using the industry standard bolt pattern provided*. Then align the accessory's gib with the Master Jaw's dovetail and slide into position



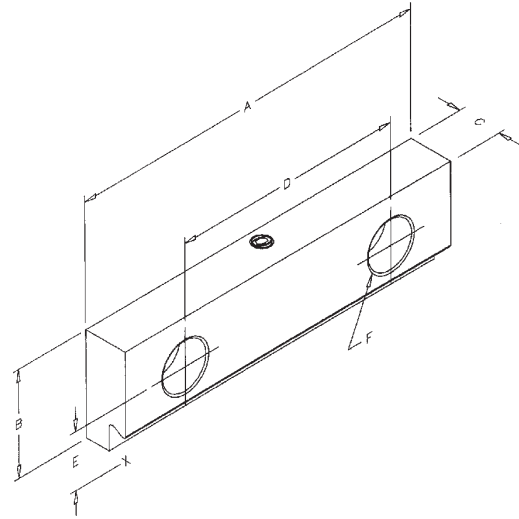
After the accessory is in position simply tighten the provided locking/self-centering screw to secure and locate properly. You are now ready to fixture your workpiece.



QuickChange Master Jaws



- For ReLock Applications, QuickChange Master Jaws mount to the SnapLock Carrier Jaws and accept all QuickChange Jaw Components.
- Install QuickChange Master Jaws to Snaplock Carrier Jaws on vise for squareness.
- Accessories slide into position via a dovetail slot.
- Replacement parts can be found on page 203
- Adaptable to most vise jaw systems

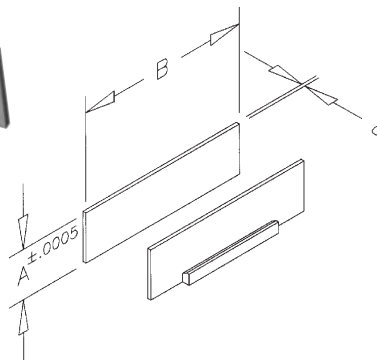


Vise Size	Part Number	A	B	C	D	E	F
4"	QMJ4000	4.06	1.235	.560	2.500	.687	3/8-16 SHCS
6"	QMJ6000	6.12	1.735	.735	3.875	.937	1/2-13 SHCS
8"	QMJ8000	8.12	2.230	1.105	4.750	1.128	5/8-11 SHCS

QuickChange Individual Parallel Sets



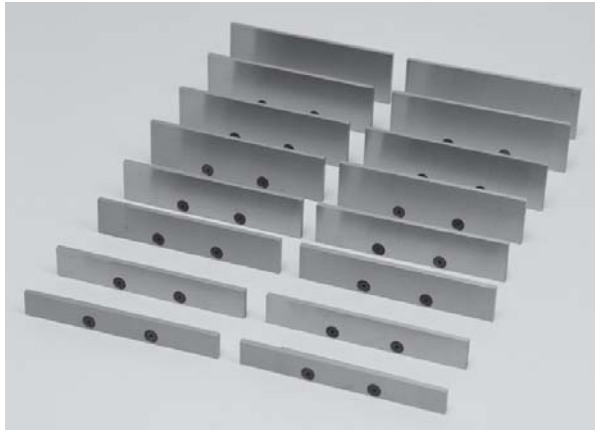
Vise Size	PART NUMBER	A	B	C
4"	QIP4001	.500	3.980	.118
	QIP4002	.625	3.980	.118
	QIP4003	.750	3.980	.118
	QIP4004	.875	3.980	.118
	QIP4005	1.000	3.980	.118
	QIP4006	1.062	3.980	.118
	QIP4007	1.125	3.980	.118
	QIP4008	1.190	3.980	.118
6"	QIP6001	.750	5.980	.118
	QIP6002	.875	5.980	.118
	QIP6003	1.000	5.980	.118
	QIP6004	1.125	5.980	.118
	QIP6005	1.250	5.980	.118
	QIP6006	1.375	5.980	.118
	QIP6007	1.500	5.980	.118
	QIP6008	1.625	5.980	.118
	QIP6009	1.690	5.980	.118
8"	QIP8001	1.000	7.980	.118
	QIP8002	1.250	7.980	.118
	QIP8003	1.375	7.980	.118
	QIP8004	1.500	7.980	.118
	QIP8005	1.625	7.980	.118
	QIP8006	1.750	7.980	.118
	QIP8007	1.875	7.980	.118
	QIP8008	2.000	7.980	.118
	QIP8009	2.125	7.980	.118



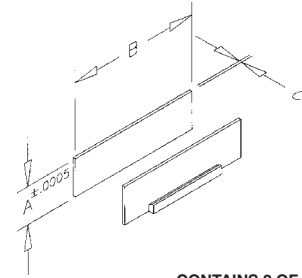
- Designed to be used with QuickChange Master Jaws
- Expanded QuickChange Parallel Sets available on pages 189 and 191
- Parallels are packaged two to a set

Before mounting AccuSnap Master Jaws, thoroughly inspect, clean, and remove any burrs or chips from mounting surface.

QuickChange Parallel Kits



- Designed to be used with QuickChange Master Jaws shown on page 188
- Individual QuickChange Parallel Sets available on page 188
- QuickChange Starter Package can be found on page 191



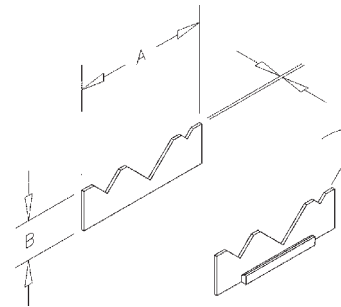
CONTAINS 2 OF EACH

Vise Size	PART NUMBER		A		B	C
	Basic	Advanced	Basic	Advanced		
4"	QPS4000	QPS4001	.500	.500 1.000	3.980	.118
			.750	.625 1.125		
			1.000	.750 1.062		
			1.125	.875 1.190		
6"	QPS6000	QPS6001	.750	.750 1.375	5.980	.118
			1.000	.875 1.500		
			1.250	1.000 1.625		
			1.500	1.125 1.690		
8"	QPS8000	QPS8001	1.625	1.250	7.980	.118
			1.000	1.000 1.750		
			1.250	1.250 1.875		
			1.500	1.375 2.000		
			1.750	1.500 2.125		
			2.000	1.625		
			2.125			

QuickChange Individual Mill Angles

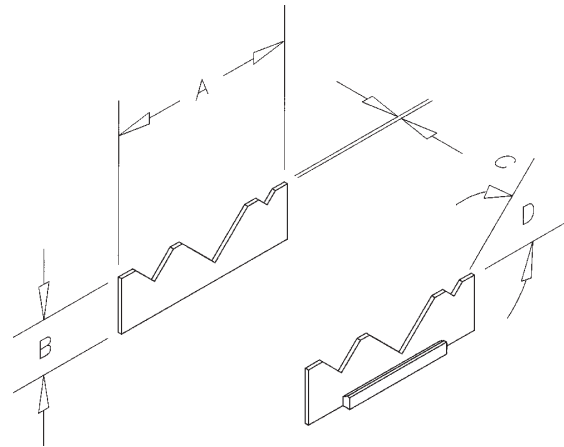


- Designed to be used with QuickChange Master Jaws shown on page 188
- QuickChange Mill Angle Parallel Sets available on page 190
- QuickChange Starter Package can be found on page 191
- Sold as individual units



Vise Size	PART NUMBER	A	B	C	D (Degree)	
4"	Individual	4.000	1.240	.118	QMA4020	20
	QMA4025				25	
	QMA4030				30	
	QMA4035				35	
	QMA4040				40	
	QMA4045				45	
6"	Individual	6.000	1.740	.118	QMA6020	20
	QMA6025				25	
	QMA6030				30	
	QMA6035				35	
	QMA6040				40	
	QMA6045				45	
8"	Individual	8.000	2.230	.118	QMA8020	20
	QMA8025				25	
	QMA8030				30	
	QMA8035				35	
	QMA8040				40	
	QMA8045				45	

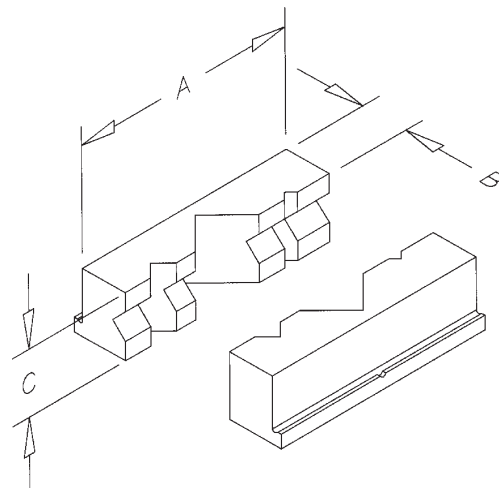
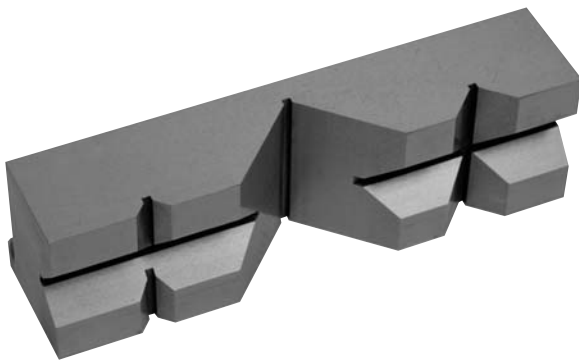
QuickChange Mill Angles Sets



- Designed to be used with QuickChange Master Jaws on page 188
- Individual QuickChange Mill Angles are on page 189
- QuickChange Starter Package can be found on page 191

Vise Size	Part Number	A	B	C	(1 of ea. degree)		
					D		
4"	QMA4000	4.000	1.240	.118	20	25	30
					35	40	45
6"	QMA6000	6.000	1.740	.118	20	25	30
					35	40	45
8"	QMA8000	8.000	2.230	.118	20	25	30
					35	40	45

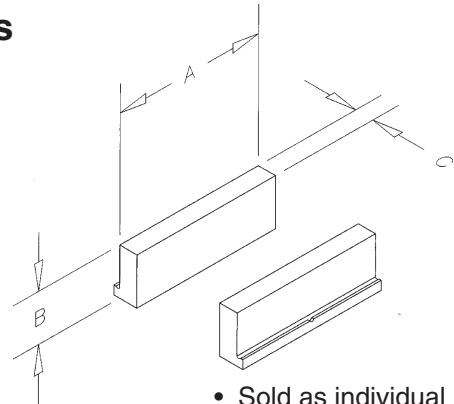
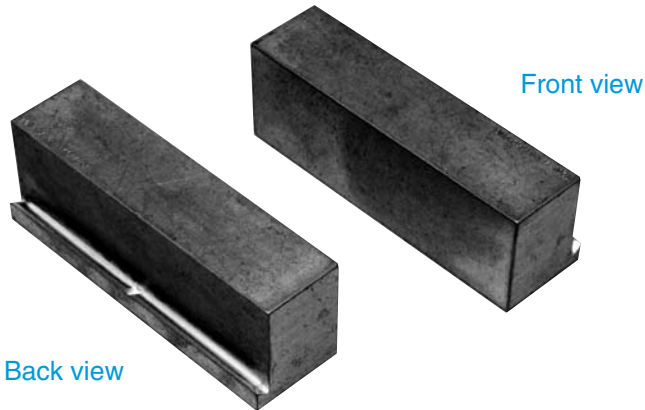
QuickChange "V" Jaws



- Designed to be used with QuickChange Master Jaws on page 188
- QuickChange Starter Package available on page 191
- Sold as individual units

Vise Size	Part Number	A	B	C
4"	QVJ4000	4.00	1.00	1.24
6"	QVJ6000	6.00	1.25	1.74
8"	QVJ8000	8.00	1.75	2.24

QuickChange Machinable (Soft) Fixture Jaws

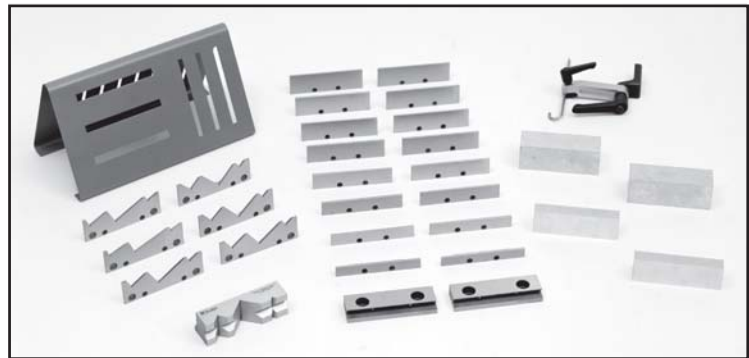


• Sold as individual units

- Use in conjunction with QuickChange Master Jaws shown on page 188
- Can be Modified to fit your individual needs

Vise Size	PART NUMBER		A	B	C
	Aluminum	Steel			
4"	QSJ4000	QSJ4020	4.00	1.50	.69
	QSJ4001	QSJ4021			
6"	QSJ6000	QSJ6020	6.00	2.00	.75
	QSJ6001	QSJ6021			
8"	QSJ8000	QSJ8020	8.00	2.50	1.25
	QSJ8001	QSJ8021			

QuickChange Starter Packages



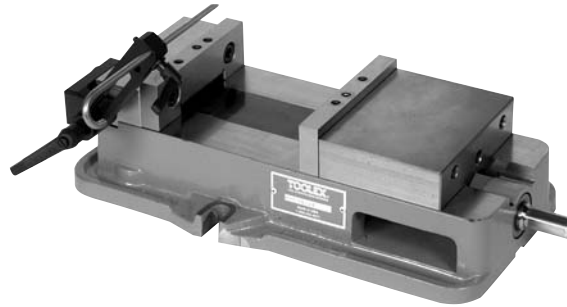
Each package contains the following QuickChange items:

Vise Size	Part Number	Master Jaws	Basic Parallel Set	Advanced Parallel Set	Mill Angle Set	Aluminum Fixture Jaws	V-Jaws	QuickStop	Holder Rack
BASIC STARTER PACKAGE									
4"	QBP4000	1 Pair	1 Set						
6"	QBP6000	1 Pair	1 Set						
8"	QBP8000	1 Pair	1 Set						
ADVANCED STARTER PACKAGE									
4"	QAP4000	1 Pair		1 Set					1 Piece
6"	QAP6000	1 Pair		1 Set					1 Piece
8"	QAP8000	1 Pair		1 Set					1 Piece
TOOLMAKER/MOLDER PACKAGE									
4"	QTM4000	1 Pair		1 Set	1 Set	2 Pieces	1 Piece	1 Piece	1 Piece
6"	QTM6000	1 Pair		1 Set	1 Set	2 Pieces	1 Piece	1 Piece	1 Piece
8"	QTM8000	1 Pair		1 Set	1 Set	2 Pieces	1 Piece	1 Piece	1 Piece

**THREE
STARTER
PACKAGES
AVAILABLE**

VISES AND ACCESSORIES

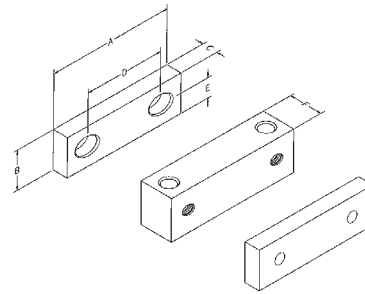
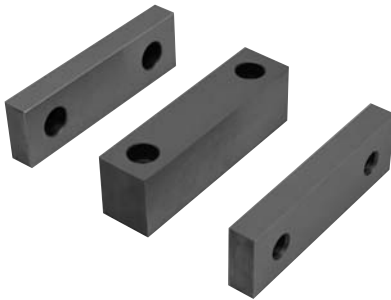
QuickStop



- Universal Mounting Bracket mounts to many vise configurations.
- After tightening, handles can be rotated 360 degrees for tool and cutter clearance.
- Fully adjustable to adapt to many workpiece configurations.

Vise Size	Part Number	Thread Size
4"	QVS4000	3/8-16
6"	QVS6000	1/2-13
8"	QVS8000	5/8-11

Standard Hard Jaws



- Manufactured from steel.
- Center jaw is only adaptable to the Toolex ReLock System.
- Outside jaws fit most vises via universal bolt hole pattern.
- Install Hard Jaws to SnapLock Carrier Jaws on vise for squareness.

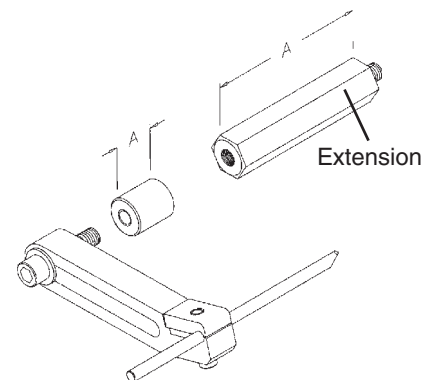
Vise Size	Part Desc.	PART NUMBER	A	B	C	D	E	F
4"	3 pc. Set	SHJ4035	3.980	1.350	.560	2.500	.687	1.250
	2 Outside	SHJ4000	3.980	1.350	.560	2.500	.687	---
	1 Center	SHJ4030	3.980	1.350	---	---	---	1.250
6"	3 pc. Set	SHJ6035	5.980	1.850	.750	3.875	.937	1.500
	2 Outside	SHJ6000	5.980	1.850	.750	3.875	.937	---
	1 Center	SHJ6030	5.980	1.850	---	---	---	1.500
8"	3 pc. Set	SHJ8035	7.980	2.350	1.125	4.750	1.218	1.980
	2 Outside	SHJ8000	7.980	2.350	1.125	4.750	1.218	---
	1 Center	SHJ8030	7.980	2.350	---	---	---	1.980

Universal Workstop

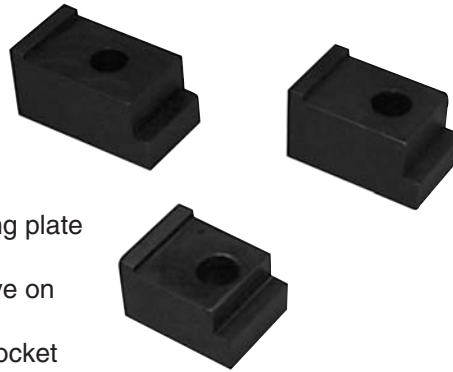


- More than one extension can be used for larger workpieces.

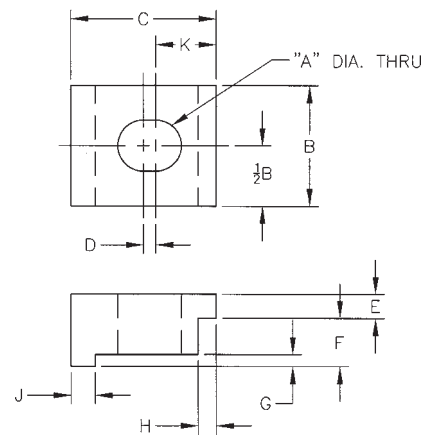
Vise Size	Part Description	Part Number	A	Thread Size
4"	Workstop & Adapter	UWS4000	1.000	5/16-18
	Extension	UWS4001	4.000	
6"	Workstop & Adapter	UWS6000	1.000	3/8-16
	Extension	UWS6001	6.000	
8"	Workstop & Adapter	UWS8000	1.000	1/2-13
	Extension	UWS8001	8.000	



Vise Clamps



- Adaptable to most vises
- Used to secure vise to tooling plate or machine table
- Insert clamp nose into groove on side of vise
- Use clamps with standard socket head cap screws
- Black Oxide Finish and Case Hardened
- Material: 1018 Steel

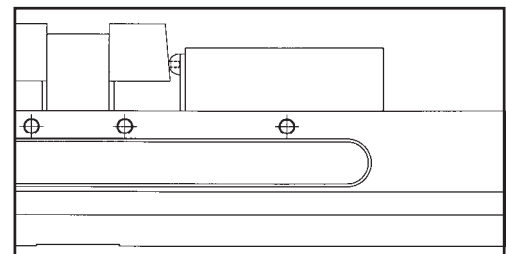


Part Number	Vise Size	A	B	C	D	E	F	G	H	J	K
RWS4553	4"	3/8	1.25	1.50	.13	.25	.50	.13	.19	.25	.63
RWS4554	4"	1/2	1.25	1.50	.13	.25	.50	.13	.19	.25	.63
RWS6553	6"	3/8	1.25	2.12	.13	.50	.75	.19	.25	.25	.85
RWS6554	6"	1/2	1.25	2.12	.13	.50	.75	.19	.25	.25	.85
RWS6555	6"	5/8	1.25	2.12	.13	.50	.75	.19	.25	.25	.85

Bumper Assembly for AccuSnap Parallels



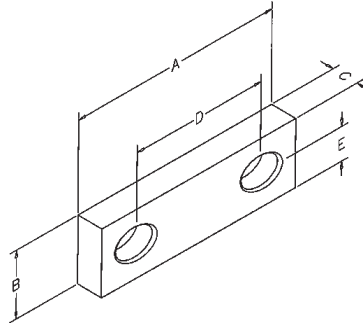
Vise Size	Part Number
4"	APS4010
6"	APS6010
8"	APS8010



- Provides single point contact when clamping
- Helps compensate for any out of squareness of stock
- Black Oxide Finish and Case Hardened
- Available for 4", 6" & 8" parallel sizes
- Also available as a special Brass Finish for aluminum parts
- Two screws included with bumper assembly
- Sold individually



Bolt-On Aluminum Soft Jaws



- Fits most industry vises including all Toolex vises.
- Aircraft alloy aluminum
- Flat and parallel within .001".
- Aluminum Soft Jaws can be modified quickly and inexpensively.

Vise Size	Part Number	A	B	C	D	E
4"	SJB4000	5.000	1.500	.980	2.500	.687
6"	SJB6000	7.000	2.000	1.230	3.875	.937
8"	SJB8000	9.000	2.500	1.730	4.750	1.128

Holder Racks for AccuSnap® Parallels



- Manufactured from steel.
- Allows convenient storage of parallels.

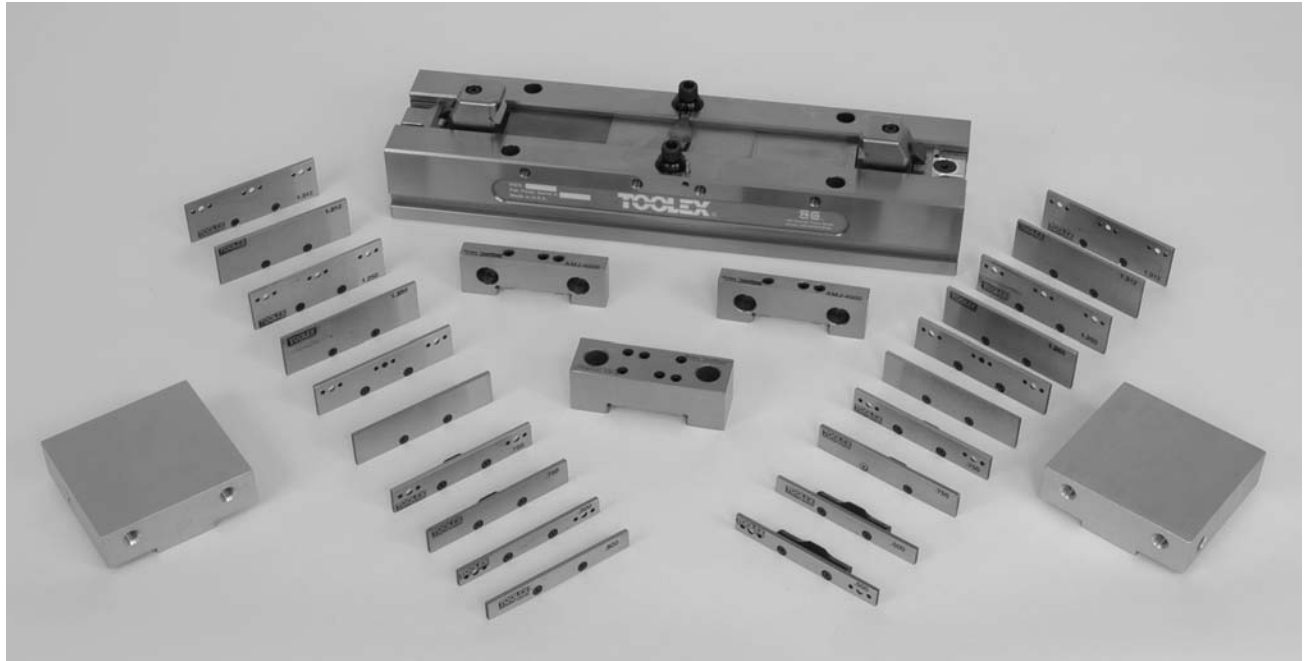
Vise Size	Part Number	Fits Parallel Kit
4"	AHR4000	APS4001 Advanced
4"	AHR4001	APS4000 Basic
6"	AHR6000	APS6001 Advanced
6"	AHR6001	APS6000 Basic

Chip Shield Covers for Toolex Double Station Vise



- Three piece set includes two outside and one center chip shield.
- Fits the Toolex Double Station and Eight Station Vises only.
- Chip shields cover vise segment screw mechanism to keep out chips and debris.

Vise Size	Part Number
4"	RWS4561
6"	RWS6561
8"	RWS8561



2-Station Vise Packages

Package #RSP4002 includes:

Qty.	PART NUMBER	Part Description
1	RWS4002	4" ReLock 2-Station Vise
1	SCJ4000	SnapLock Carrier Jaws (2 outside jaws)
1	AMJ4035	AccuSnap Master Jaws (3 pc. set)
2	APS4000	AccuSnap Basic Parallel Set

Package #RSP6002 includes:

Qty.	PART NUMBER	Part Description
1	RWS6002	6" ReLock 2-Station Vise
1	SCJ6000	SnapLock Carrier Jaws (2 outside jaws)
1	AMJ6035	AccuSnap Master Jaws (3 pc. set)
2	APS6000	AccuSnap Basic Parallel Set

Package #RSP8002 includes:

Qty.	PART NUMBER	Part Description
1	RWS8002	8" ReLock 2-Station Vise
1	SCJ8000	SnapLock Carrier Jaws (2 outside jaws)
1	AMJ8035	AccuSnap Master Jaws (3 pc. set)
2	APS8000	AccuSnap Basic Parallel Set

8-Station Vise Packages

Package #RSP4008 includes:

Qty.	PART NUMBER	Part Description
1	RWS4008	4" ReLock 8-Station Vise
4	SCJ4000	SnapLock Carrier Jaws (2 outside jaws)
4	AMJ4035	AccuSnap Master Jaws (3 pc. set)
8	APS4000	AccuSnap Basic Parallel Set

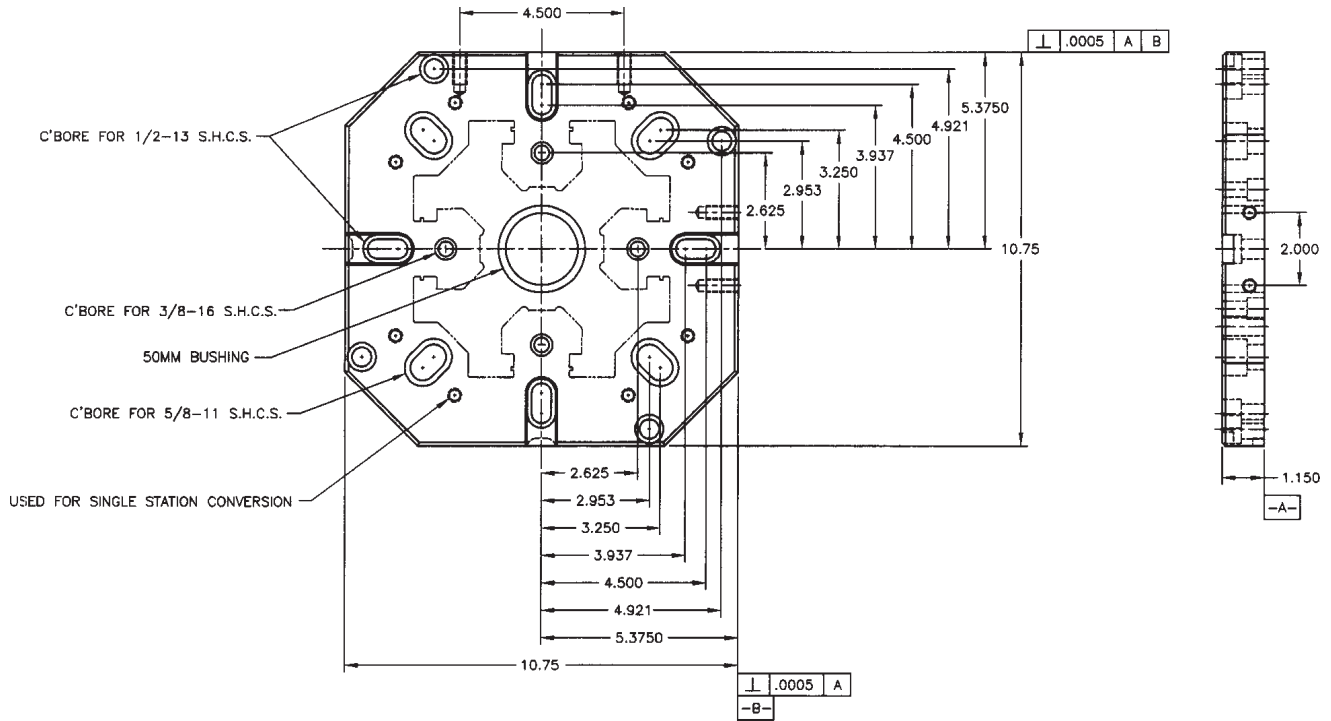
Package #RSP6008 includes:

Qty.	PART NUMBER	Part Description
1	RWS6008	6" ReLock 8-Station Vise
4	SCJ6000	SnapLock Carrier Jaws (2 outside jaws)
4	AMJ6035	AccuSnap Master Jaws (3 pc. set)
8	APS6000	AccuSnap Basic Parallel Set

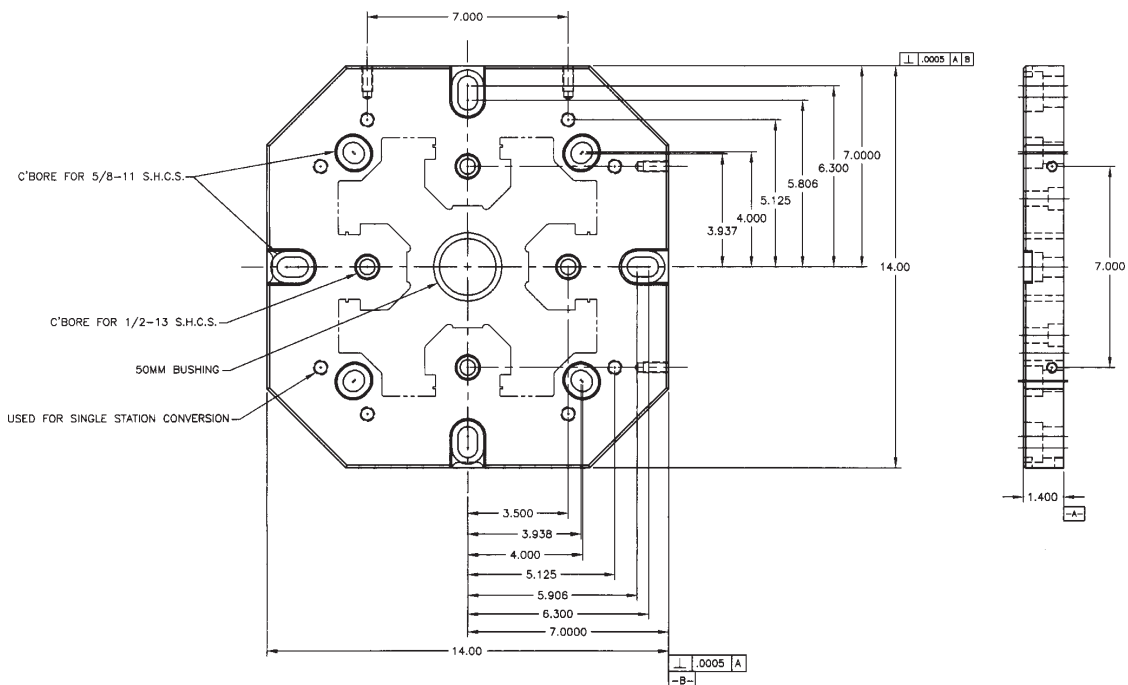
Package #RSP8008 includes:

Qty.	PART NUMBER	Part Description
1	RWS8008	8" ReLock 8-Station Vise
4	SCJ8000	SnapLock Carrier Jaws (2 outside jaws)
4	AMJ8035	AccuSnap Master Jaws (3 pc. set)
8	APS8000	AccuSnap Basic Parallel Set

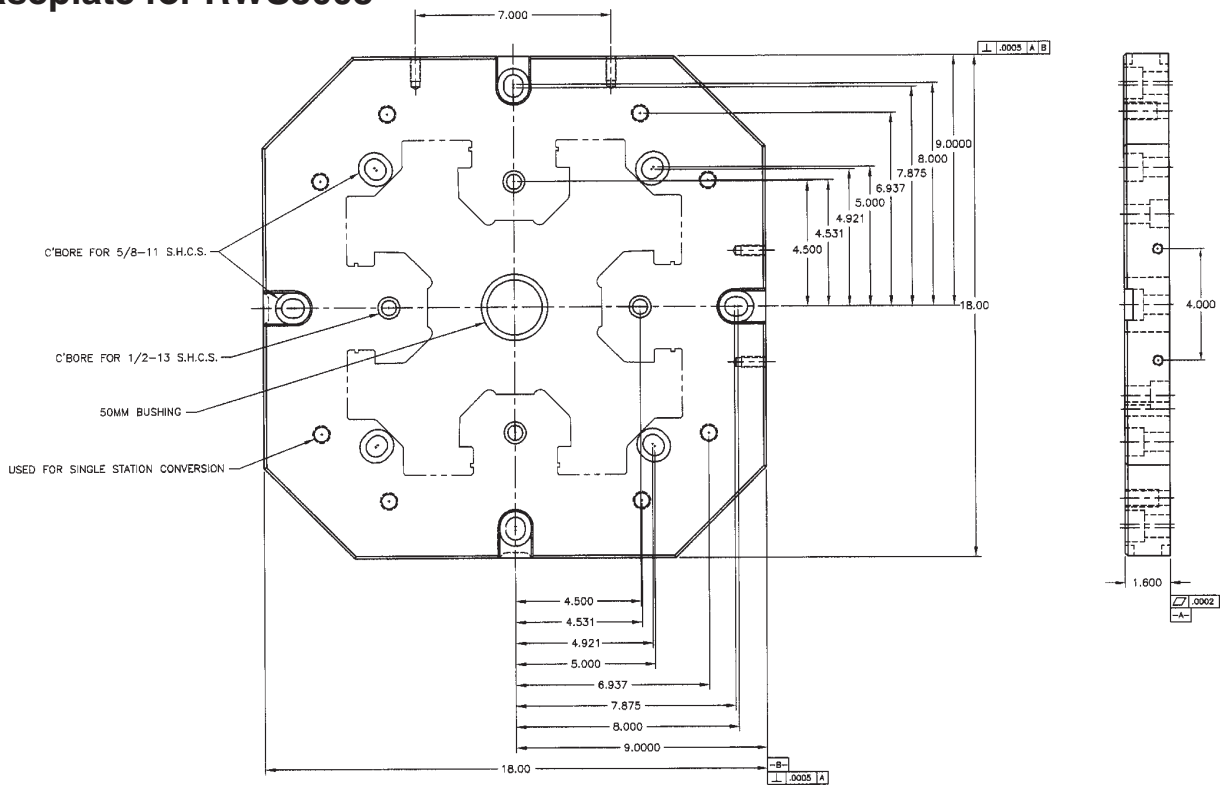
Baseplate for RWS4008



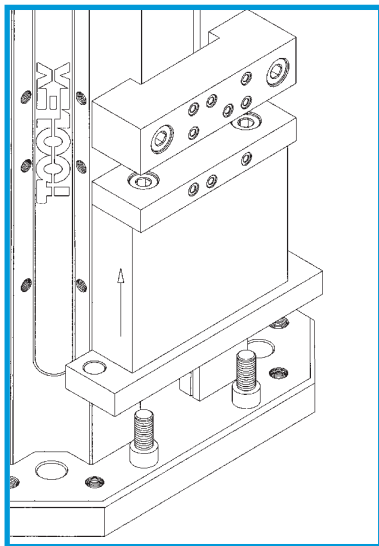
Baseplate for RWS6008



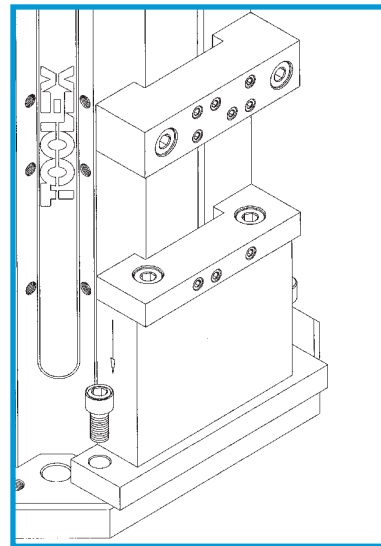
Baseplate for RWS8008



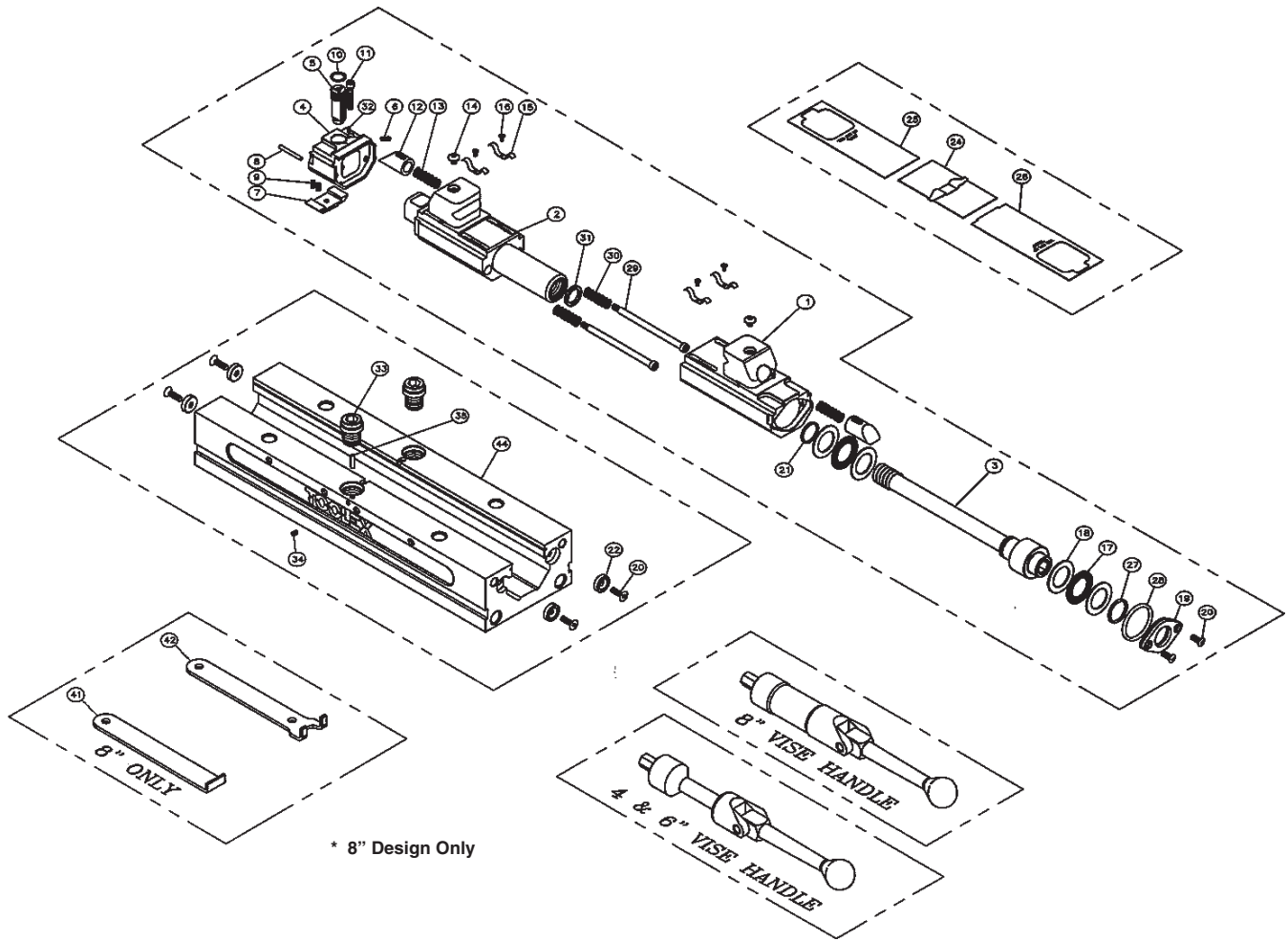
Mounting Instructions for Single Station Conversion Plate on a ReLock 8-Station Vise



Crank bottom jaw toward center of vise. Mount single station conversion plate to the back carrier jaw as shown



Crank bottom jaw down until the single station conversion plate touches baseplate. Mount the single station conversion plate to the baseplate.

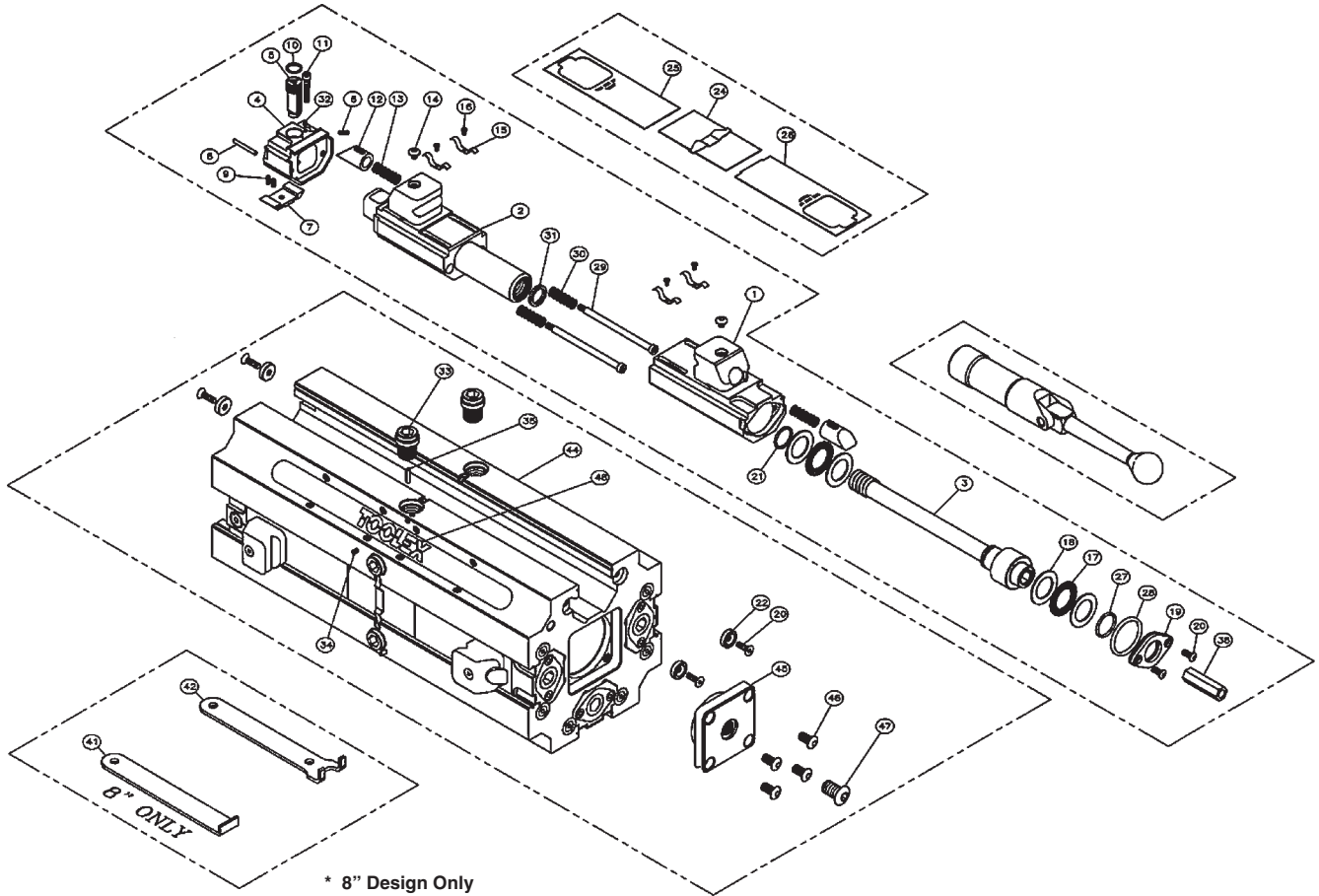


* 8" Design Only

RELOCK 2-STATION VISE PARTS LIST				
#	Description	4" Vise	6" Vise	8" Vise
1	ReLock Front Slide Segment	RWS4500RP	RWS6500	RWS8500
2	ReLock Rear Slide Segment	RWS4501RP	RWS6501	RWS8501
3	ReLock Slide Segment Screw	RWS4502	RWS6502	RWS8502
4	ReLock Brake Housing	RWS4503	RWS6503	RWS8503
5	ReLock Automatic Offset Dial	RWS4504	RWS6504	RWS8504
6	ReLock Brake Dial Spring Plunger	53402X	53402X	53207
7	ReLock Brake Spring	RWS4506	RWS6506	RWS8506
8	Brake Spring Dowel Pin	RWS4507	RWS6507	RWS8507
9	Brake Compression Spring	RWS6508	RWS6508	RWS8508
10	Offset Dial O-Ring Seal	RWS4509	RWS6509	RWS8509
11	ReLock Brake Spring Screw	RWS4510	RWS6510	RWS8510
12	ReLock Segment Latch Plunger	RWS4511	RWS6511	RWS8511
13	Latch Plunger Compression Spring	RWS4512	RWS6512	RWS8512
14	ReLock Retaining Screw	RWS4513	RWS6513	RWS8513
15	ReLock Chip Shield Spring	RWS6514	RWS6514	RWS8514
16	Shield Spring Screw	RWS6515	RWS6515	RWS8515
17	ReLock Thrust Bearing	RWS4516	RWS6516	RWS8516
18	ReLock Thrust Washer	RWS4517	RWS6517	RWS8517
19	ReLock Screw Retainer Plate	RWS4518	RWS6518	RWS8518
20	Retainer Plate Screw	RWS4519	RWS6519	RWS8519
21	ReLock Screw O-Ring Seal	RWS6509	RWS6520	RWS6526
22	ReLock Stop Button	RWS4521	RWS6521	RWS8521
23	Stop Button Screw	RWS4522	RWS6522	RWS8522
24	ReLock Center Chip Shield	RWS4523	RWS6523	RWS8523
25	ReLock Rear Chip Shield	RWS4524	RWS6524	RWS8524
26	ReLock Front Chip Shield	RWS4525	RWS6525	RWS8525
27	Retaining Plate O-Ring Seal	RWS4526	RWS6526	RWS4527
28	Retaining Plate O-Ring Seal	RWS4527	RWS6527	RWS8527
29	ReLock Shoulder Screw	RWS4528	RWS6528	RWS8528
30	ReLock Compression Spring	RWS4529	RWS6529	RWS8529
31	ReLock U-Seal	RWS4530	RWS6530	RWS8530
32	ReLock Shoulder Screw	RWS4531	RWS6531	RWS8531
33	ReLock Jaw Locating Stud	RWS4532	RWS6532	RWS8532
34	ReLock Shoulder Screw	RWS4533	RWS6533	RWS8533
35	ReLock Dowel Pin	RWS4534	RWS6534	RWS8534
41	ReLock Pry Wrench			RWS8540
42	ReLock Chip Shield Wrench	RWS4540	RWS6540	RWS8545
-	ReLock 2-Station Vise Body	RWS4543	RWS6543	RWS8543
-	Center Jaw Socket Head Cap Screw (not shown)	RWS4550	RWS6550	RWS8550
-	ReLock Vise Label	RWS4010	RWS6010	RWS8010

RELOCK 2-STATION VISE SUBASSEMBLY				
#	Description	4" Vise	6" Vise	8" Vise
	ReLock Segment Assembly (Items 1-21, 27-32)	RWS4560	RWS6560	RWS8560
	ReLock Chip Shield Assembly (Items 24-26)	RWS4561	RWS6561	RWS8561
	ReLock Handle Assembly	RWS4566	RWS6566	RWS8562
	ReLock Vise Tool Kit (Items 41-43)	RWS4563	RWS6563	RWS8563

**To order vise handle components, please contact
your local distributor or TE-CO at 800-543-4071**

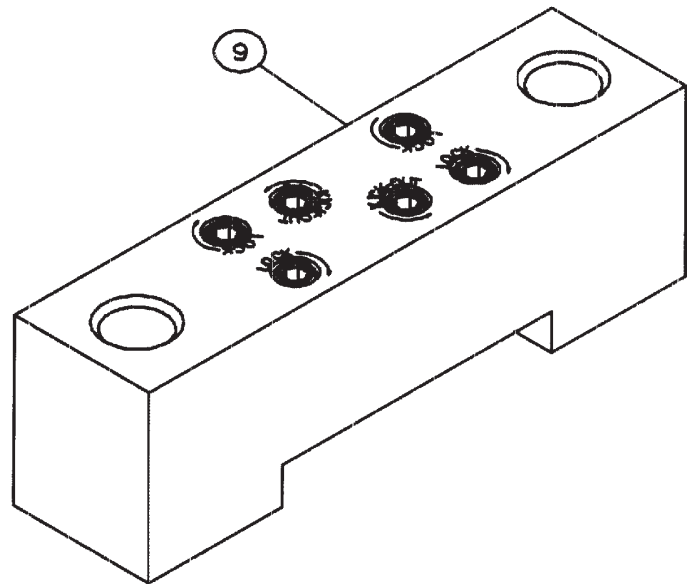
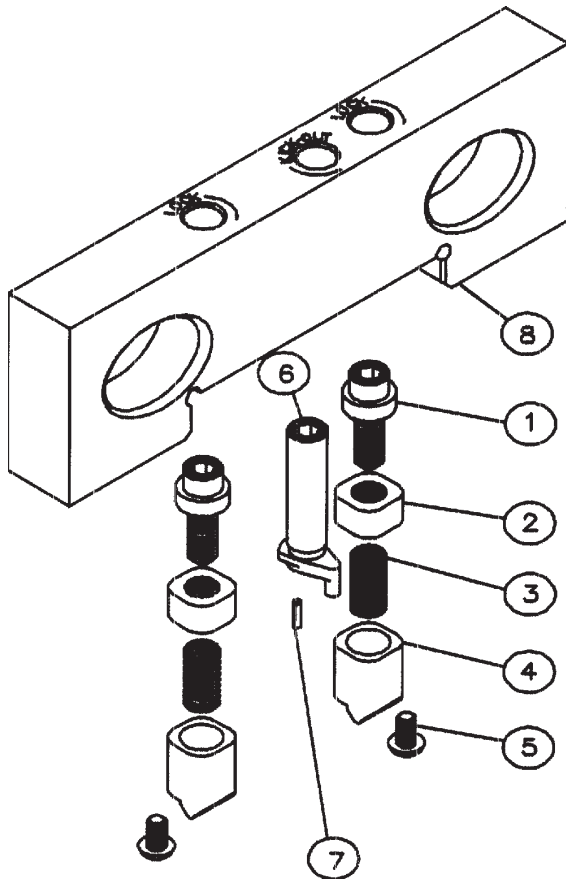


RELOCK 8-STATION VISE PARTS LIST				
#	Description	4" Vise	6" Vise	8" Vise
1	ReLock Front Slide Segment	RWS4500RP	RWS6500	RWS8500
2	ReLock Rear Slide Segment	RWS4501RP	RWS6501	RWS8501
3	ReLock Slide Segment Screw	RWS4502	RWS6502	RWS8502
4	ReLock Brake Housing	RWS4503	RWS6503	RWS8503
5	ReLock Automatic Offset Dial	RWS4504	RWS6504	RWS8504
6	ReLock Brake Dial Spring Plunger	53402X	53402X	53207
7	ReLock Brake Spring	RWS4506	RWS6506	RWS8506
8	Brake Spring Dowel Pin	RWS4507	RWS6507	RWS8507
9	Brake Compression Spring	RWS6508	RWS6508	RWS8508
10	Offset Dial O-Ring Seal	RWS4509	RWS6509	RWS8509
11	ReLock Brake Spring Screw	RWS4510	RWS6510	RWS8510
12	ReLock Segment Latch Plunger	RWS4511	RWS6511	RWS8511
13	Latch Plunger Compression Spring	RWS4512	RWS6512	RWS8512
14	ReLock Retaining Screw	RWS4513	RWS6513	RWS8513
15	ReLock Chip Shield Spring	RWS6514	RWS6514	RWS8514
16	Shield Spring Screw	RWS6515	RWS6515	RWS8515
17	ReLock Thrust Bearing	RWS4516	RWS6516	RWS8516
18	ReLock Thrust Washer	RWS4517	RWS6517	RWS8517
19	ReLock Screw Retainer Plate	RWS4518	RWS6518	RWS8518
20	Retainer Plate Screw	RWS4519	RWS6519	RWS8519
21	ReLock Screw O-Ring Seal	RWS6509	RWS6520	RWS6526
22	ReLock Stop Button	RWS4521	RWS6521	RWS8521
23	Stop Button Screw	RWS4522	RWS6522	RWS8522
24	ReLock Center Chip Shield	RWS4523	RWS6523	RWS8523
25	ReLock Rear Chip Shield	RWS4524	RWS6524	RWS8524
26	ReLock Front Chip Shield	RWS4525	RWS6525	RWS8525
27	Retaining Plate O-Ring Seal	RWS4526	RWS6526	RWS4527
28	Retaining Plate O-Ring Seal	RWS4527	RWS6527	RWS8527
29	ReLock Shoulder Screw	RWS4528	RWS6528	RWS8528
30	ReLock Compression Spring	RWS4529	RWS6529	RWS8529
31	ReLock U-Seal	RWS4530	RWS6530	RWS8530
32	ReLock Shoulder Screw	RWS4531	RWS6531	RWS8531
33	ReLock Jaw Locating Stud	RWS4532	RWS6532	RWS8532
34	ReLock Shoulder Screw	RWS4533	RWS6533	RWS8533
35	ReLock Dowel Pin	RWS4534	RWS6534	RWS8534
41	ReLock Pry Wrench			RWS8540
42	ReLock Chip Shield Wrench	RWS4540	RWS6540	RWS8545
43	ReLock 8-Station Vise Body	RWS4544	RWS6544	RWS8544
44	ReLock End Cap	RWS4546	RWS6546	RWS8546
45	ReLock Socket Head Cap Screw	RWS4547	RWS6547	RWS8547
-	ReLock Cap Screw	RWS4548	RWS6548	RWS8548
-	ReLock Dowel Pin	RWS6549	RWS6549	RWS8549
46	Center Jaw Socket Head Cap Screw (not shown)	RWS4550	RWS6550	RWS8550
47	ReLock Vise Label	RWS4010	RWS6010	RWS8010

RELOCK 8-STATION VISE SUBASSEMBLY				
#	Description	4" Vise	6" Vise	8" Vise
	ReLock Segment Assembly (Items 1-21, 27-32)	RWS4560	RWS6560	RWS8560
	ReLock Chip Shield Assembly (Items 24-26)	RWS4561	RWS6561	RWS8561
	ReLock Handle Assembly	RWS4562	RWS6562	RWS8562
	ReLock Vise Tool Kit (Items 41-43)	RWS4563	RWS6563	RWS8563

**To order vise handle components, please contact
your local distributor or TE-CO at 800-543-4071**

AccuSnap Master Jaws & Parallels

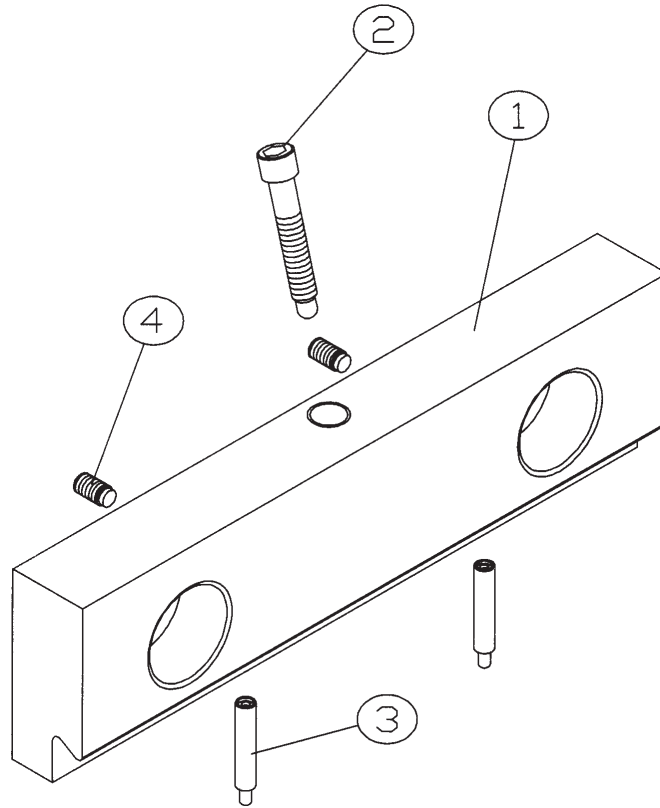


ACCUSNAP MASTER JAW PARTS LIST				
#	Description	4" Vise	6" Vise	8" Vise
1	AccuSnap Lock Screw	AMJ4500	AMJ6500	AMJ8500
2	AccuSnap Lock	AMJ4501	AMJ6501	AMJ8501
3	AccuSnap Spring	AMJ4502	AMJ6502	AMJ8502
4	AccuSnap Spring Plunger	AMJ4503	AMJ6503	AMJ8503
5	AccuSnap Cap Screw	AMJ4504	AMJ6504	AMJ8504
6	AccuSnap Kick Out Pawl	AMJ4505	AMJ6505	AMJ8505
7	AccuSnap Spring Pin	AMJ6506	AMJ6506	SCJ6501
8	AccuSnap Plain Outside Jaw	AMJ4507	AMJ6507	AMJ8507
9	AccuSnap Plain Center Jaw	AMJ4508	AMJ6508	AMJ8508

**PARTS
AVAILABLE
INDIVIDUALLY
OR IN
REPAIR KITS**

Qty.	ACCUSNAP REPAIR KITS Description	ARK4000 CONTAINS	ARK6000 CONTAINS	ARK8000 CONTAINS
2	AccuSnap Lock Screw	AMJ4500	AMJ6500	AMJ8500
2	AccuSnap Lock	AMJ4501	AMJ6501	AMJ8501
2	AccuSnap Spring	AMJ4502	AMJ6502	AMJ8502
2	AccuSnap Spring Plunger	AMJ4503	AMJ6503	AMJ8503
2	AccuSnap Cap Screw	AMJ4504	AMJ6504	AMJ8504
1	AccuSnap Kick Out Pawl	AMJ4505	AMJ6505	AMJ8505
1	AccuSnap Spring Pin	AMJ4506	AMJ6506	SCJ6501

QuickChange Master Jaws



QUICKCHANGE MASTER JAW PARTS LIST				
#	Description	4" Vise	6" Vise	8" Vise
1	QuickChange Plain Master Jaw	QMJ4500	QMJ6500	QMJ8500
2	QuickChange Locking Screw	QMJ4501	QMJ6501	QMJ8501
3	QuickChange Plunger Assembly	QMJ6502	QMJ6502	QMJ6502
4	QuickChange Locking Screw	QMJ6503	QMJ6503	QMJ6503

Special Request For Quotation:

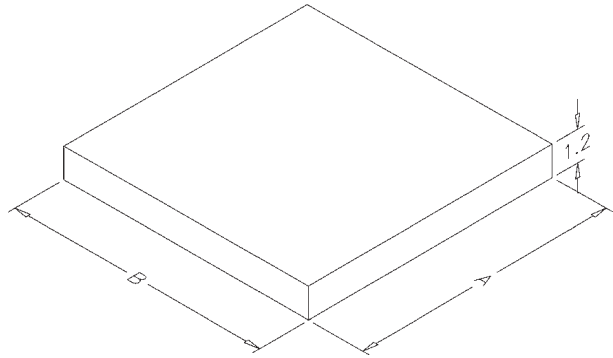
If you have a requirement that can not be met with one of our standards, please do the following:

1. Photocopy this page for an accurate quote.
2. Fill in the information concerning the product that will be quoted. Sketch in any information that is not provided. Be as detailed as possible.
3. Mail or Fax the RFQ sheet to TE-CO.
4. **Note: If ordered, this item will be manufactured directly from the information provided on this page. Please be sure information is correct. Authorized Signature is required.**
5. Please draw in mounting holes or specification required for mounting to a pallet or machine table.
6. Please draw in and dimension holes needed in the face for fixtures. Please be sure to include all information requested in the chart below.

Quantity: _____

	A	B	*Thickness
1.			
2.			
3.			
4.			

*If other than specified on drawing (i.e. 1/2")



Hole Specifications

	Hole Type	Hole Size	Hole Tolerance	Location Tolerance	Quantity of Holes
Ex.	Dowel	1/2"	±.0005	±.001	2 0
1.					
2.					
3.					

Cut Corners on Base:

(Specify Size and Angle)

Yes _____

No _____

Company Name: _____

Address: _____

City: _____

State: _____ Zip: _____

Phone: _____

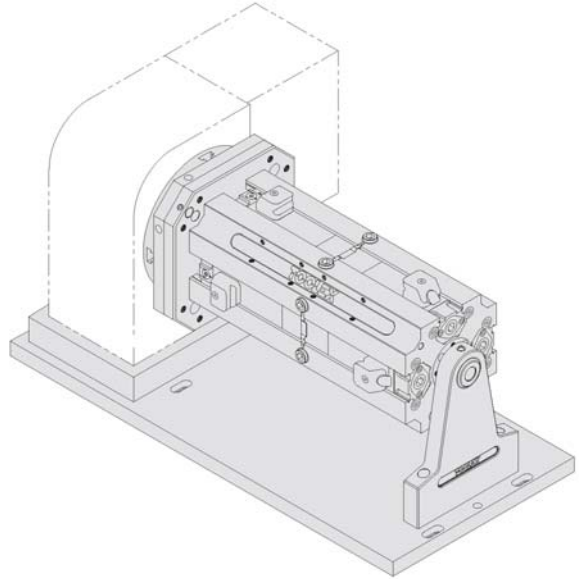
Fax: _____

Authorized Signature: _____ Date: _____

Special Request For Quotation:

If you have a requirement that can not be met with one of our standards, please do the following:

1. Photocopy this page for an accurate quote.
2. Fill in the information concerning the product that will be quoted. Sketch in any information that is not provided. Be as detailed as possible.
3. Mail or Fax the RFQ sheet to TE-CO.
4. **Note: If ordered, this item will be manufactured directly from the information provided on this page. Please be sure information is correct. Authorized Signature is required.**



Machining Center Make: _____ Model #: _____

Indexer/Rotary Table Make: _____ Model #: _____

Minimum desired distance for part clearance: _____

If mounting to a Pallet System, please indicate:

Make: _____ Model #: _____

Company Name: _____

Address: _____

City: _____

State: _____ Zip: _____

Phone: _____

Fax: _____

Authorized Signature: _____ Date: _____

***Specials may require extended delivery time.**